

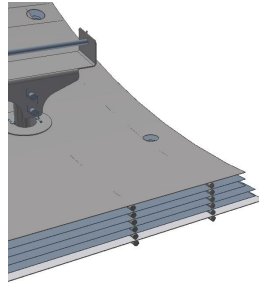
Hot zone quality packages

Basic

Premium

Enerzone

Hot zone shield pack 1st layer: Hot face



1 Hot face Mo 0,5mm

1 Hot face Mo 0,5mm

1 Hot face ML 0,381mm

1 x high stiff honeycomb structure
ML0,254mm.

Hot zone shield pack 2nd – xth layer: (according to table with operation temperature)

< 1100°C

1st layer: see above.
1 Mo layer 0,254mm
3 SS layers 0,5mm

1st layer: see above.
1 Mo layer 0,254mm
3 SS layers 0,5mm

1st layer: see above.
3 Mo layers 0,254mm
1 SS layers 0,5mm

1100°C to 1350°C:

1st layer: see above.
2 Mo layers 0,254mm
2 SS layers 0,5mm

1st layer: see above.
2 Mo layers 0,254mm
2 SS layers 0,5mm

1st layer: see above.
4 Mo layers 0,254mm

1350°C - 1500°C:

1st layer: see above.
3 Mo layer 0,254mm
1 SS layers 0,5mm

1st layer: see above.
5 Mo layers 0,254mm

1500°C to 1600°C:

1st layer: see above.
4 Mo layer 0,254mm
1 SS layers 0,5mm

1st layer: see above.
6 Mo layers 0,254mm

1600°C to 1650°C:

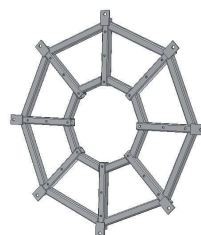
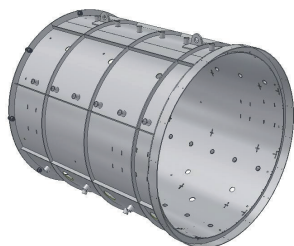
1st layer: see above.
5 Mo layer 0,254mm
1 SS layers 0,5mm

1st layer: see above.
7 Mo layers 0,254mm

ML ring cover with staples.

ML ring cover with staples.

Support structure



Side in single wall design.

Side in single wall design.

Side in single wall design.

Rear in frame design.

Rear in frame design.

Rear in frame design.

Front in frame design.

Front in frame design.

Front in frame design.

Material or high quality
Carbon steel: SS304

Material or high quality
Carbon steel: SS316Ti

Material or high quality
Carbon steel: SS316Ti

Support brackets or rails.

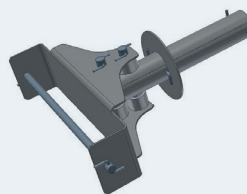
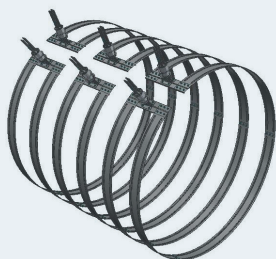
Support brackets with wheels.

Support brackets with wheels.

SS ring-shielding on door
frame.

SS ring-shielding on door frame
with ML cover 0,5 mm.

Heating system Round horizontal



3 x side heating zones

3 x side heating zones

3 x side heating zones

ML dual grooved ribbon heater.

ML dual grooved ribbon heater.

ML dual grooved ribbon heater
with high stiffness lashes.

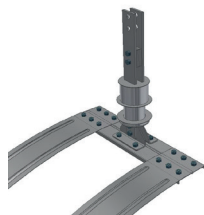
Mo Heating element supports

ML Heating element supports

ML Heating element supports

Inner shielding on heating
element support tube

Power feed troughs



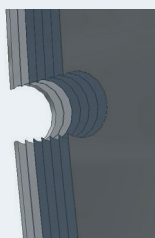
Mo standard power feed through

ML standard power feed through

ML standard power feed through

Incl. floating washers

TC holes



one per zone

one per zone

one per zone

TC port guiding tubes

TC port guiding tubes

Floating washers

Hearth assembly



Mo posts \varnothing 20 mm with
Mo caps

TZM posts \varnothing 20 mm

TZM posts \varnothing 20 mm,
deep-hole-drilled

Mo single rail 6,35 x 38,1 mm

ML U rail 3,17 mm

ML U rail 3,17 mm

Single washers

Single washers

Floating washers

Warranty

12 months

18 months

24 months

Service check

Inspection, at the end of the warranty period.

Optional features

Front & rear / top & bottom heating elements

1 x front & 1 x rear heating element for the horizontal hotzone type.

Or: 1 x top & 1 x bottom heating element for the vertical hotzone type.

1 x front & 1 x rear heating element for the horizontal hotzone type.

Or: 1 x top & 1 x bottom heating element for the vertical hotzone type.

1 x front & 1 x rear heating element for the horizontal hotzone type.

Or: 1 x top & 1 x bottom heating element for the vertical hotzone type.

Offset baffle inside

Offset optical blind baffle, inside of the hotzone.

Hot zone shield packs with Mo and ML

ML ring cover with staples

Offset optical blind baffle, inside of the hotzone.

Hot zone shield packs with Mo and ML

ML ring cover with staples

Offset baffle outside

Offset optical blind baffle, outside of the hot zone.

Hot zone shield packs with Mo, ML and SS

ML ring cover with staples

Offset optical blind baffle, outside of the hot zone.

Hot zone shield packs with Mo, ML and SS

ML ring cover with staples

Basic

Premium

Enerzone

Gas nozzles

Gas nozzles at side shielding with external covers.

Gas nozzles at side shielding with external covers.

Gas nozzles at side shielding with external covers.

External covers with Mo sheet

External covers with Mo sheet

Internal covers

Double wall support structure

gas nozzles at side shielding

gas nozzles at side shielding

Internal covers

Upgrade hearth for high load

Mo posts

TZM posts (for heavy duty)

TZM posts (for heavy duty),
deep-hole-drilled

Hearth plates or grids

Mo hearth plates or grids

Mo hearth plates or grids

Mo hearth plates or grids

ML or TZM hearth plates or grids

ML or TZM hearth plates or grids

Warranty upgrade

+ 6 months

Installation service

Remove old hot zone

Remove old hot zone

Remove old hot zone

Installation new hot zone

Installation new hot zone

Installation new hot zone

First burn outs

First burn outs

First burn outs

Service packages

Inspection and service advices for optimized lifetime enlargement.

Inspection and service advices for optimized lifetime enlargement.

Inspection and service advices for optimized lifetime enlargement.

Spare part packages

Heating elements, heating element supports, bolts, washers, pins, ceramic insulators, gas nozzles, hearth parts...

Heating elements, heating element supports, bolts, washers, pins, ceramic insulators, gas nozzles, hearth parts...

Heating elements, heating element supports, bolts, washers, pins, ceramic insulators, gas nozzles, hearth parts...

Payment models

For the ENERZONE we offer interesting types for payment and financing.
Please contact us.



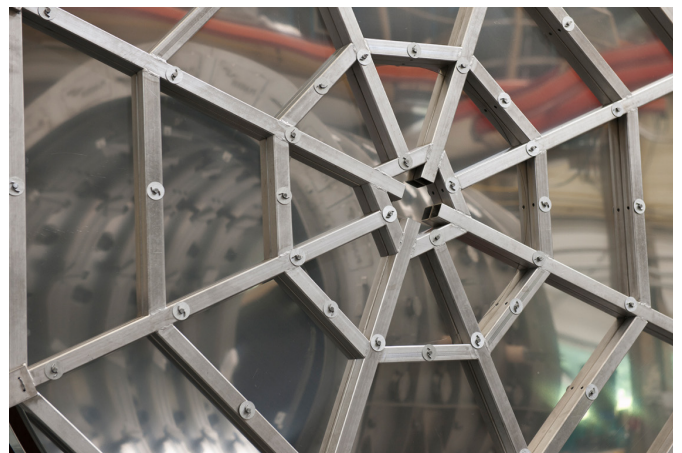
■ Posts and U rail



■ SS ring-shielding on door frame with ML cover 0,5 mm.



■ ML ring cover with staples



■ Support Structure in frame design