



Dolu malzeme delme ve delik işleme	HSS Matkaplar	1
	Karbür Matkaplar	
	Raybalar	
Diş açma	Kılavuzlar	2
	Diş açma frezeleri	
	Diş açma	
Tornalama	Tornalama Takımları	3
	EcoCut – Çok işlevli takımlar	
	Kesme ve Kanal Açma Takımları	
	UltraMini + MiniCut	
Frezeleme	Karbür Frezeler	4
Bağlama tekniği	Pensler ve Reüksiyon Kovanları	5
	Malzeme örnekleri ve malzeme no listesi	6

## İçindekiler

Genel Bakış	2
Ürün programı	
Basınçlı pensler	3-13
Kavrama pensleri	14-19
Kılavuz kovanlar	20-30
Sıkma kovanları	31-39
Redüksiyon burçları	40
Teknik Bilgiler	41

## WNT \ Performance

En yüksek performans için üstün kaliteli ürün.

**WNT Performance** grubundaki üstün kaliteli ürünler özel kullanım için üretilmiştir ve üstün performans yakalamanızı sağlar. Eğer sizde üretiminizde üretim performansı istediğiniz ve çok iyi sonuçlar elde etmek istiyorsanız, **WNT Performance** grubundaki üstün kaliteli ürünleri tavsiye ederiz.

## Genel Bakış

## Basınçlı pensler

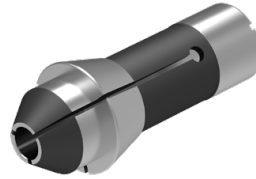
Çubuğu, hem ana tarafta hem de karşı milde sıkma için basınçlı pensler



3-13

## Kavrama pensleri

İş parçalarının daha iyi kavranması ve arka yüzlerinin daha iyi işlenebilmesi için uyarlanmış sapa sahip



14-19

## Kılavuz kovanlar

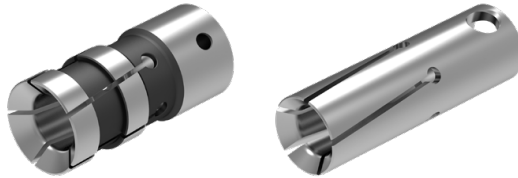
Ana tarafta çubuğun kılavuzluğunu sağlar



20-30

## Sıkma kovanları

Çubuk yükleyici magazinler için yataklama




31-39

## Redüksiyon burçları














Küçük takımlardan, görece daha büyük yuva çaplarına sahip olanları, bir redüksiyon burcu ile doğrudan takım sıkma yerlerinde kullanılabilir.




40


 Daha fazla profil şekli ve boyutların yanı sıra genişletilmiş seçenekler istek üzerine mevcuttur.

## Basınçlı penslere genel bakış

Standart	mm cinsinden sıkma çapı aralığı	Profil	Versiyon	Sayfa
116 E / F 13	Ø 6,0 – 10,0		Enine oluklar	4
	Ø 1,0 – 10,0		düz	4
120 E / F 15	Ø 6,0 – 12,0		Enine oluklar	5
	Ø 1,0 – 12,0		düz	5
	SW 2,0 – 11,0		Enine oluklar*	5
F 16 / 1212 E	Ø 1,0 – 13,0		Enine oluklar	6
	Ø 6,0 – 13,0		düz	6
136 E / F 20-201	Ø 6,0 – 16,0		Enine oluklar	7
	Ø 1,0 – 16,0		düz	7
138 E / F 20-87	Ø 6,0 – 16,0		Enine oluklar	8
	Ø 1,0 – 16,0		düz	8
	SW 2,0 – 14,0		Enine oluklar*	8
145 E / F 25	Ø 6,0 – 20,0		Enine oluklar	9+10
	Ø 1,5 – 20,0		düz	9+10
	SW 2,0 – 19,0		Enine oluklar*	9+10
	SW 2,0 – 15,0		Enine oluklar*	9+10
F 37 / 1536 E	Ø 6,0 – 32,0		Enine oluklar	11-13
	Ø 1,0 – 32,0		düz	11-13
	SW 3,0 – 27,0		Enine oluklar*	11-13
	SW 3,0 – 23,0		Enine oluklar*	11-13

\* Enine oluklar sadece SW 8'den itibaren

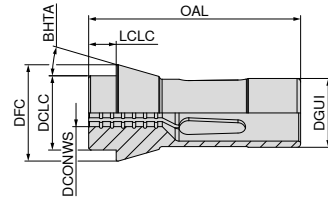
 Daha fazla profil şekli ve boyutların yanı sıra genişletilmiş seçenekler istek üzerine mevcuttur.

 Özel olarak uyarlanmış çözümler hakkında bize bir soru göndermek istemeniz halinde, ana sayfamızdaki indirme alanımızda ayrıntılı bir anket formu bulabilirsiniz. Lütfen dikkatli bir şekilde doldurun ve bastırdıktan sonra e-posta veya faks ile gönderin. → [cuttingtools.ceratizit.com/tr/tr/indirme.html](https://cuttingtools.ceratizit.com/tr/tr/indirme.html)

Lütfen doldurulmuş formu e-posta ile [info.turkey@ceratizit.com](mailto:info.turkey@ceratizit.com) adresine gönderin.

## Basınçlı pensler

Tanımlama	DGUI mm	DFC mm	DCLC mm	LCLC mm	OAL mm	BHTA °
116 E / F 13	13	19	13	6	64	16



## Basınçlı sıkma pensi 116 E / F 13



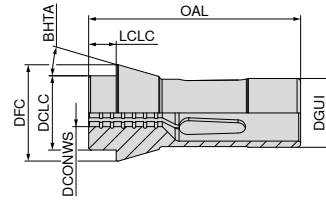
Enine oluklar  
116 E / F 13

Pürüzsüz  
116 E / F 13

DCONWS mm	81 000 ...	81 002 ...
1,0		01000
1,5		01500
2,0		02000
2,5		02500
3,0		03000
3,5		03500
4,0		04000
4,5		04500
5,0		05000
5,5		05500
6,0	06000	06000
6,5	06500	06500
7,0	07000	07000
7,5	07500	07500
8,0	08000	08000
8,5	08500	08500
9,0	09000	09000
9,5	09500	09500
10,0	10000	10000

## Basınçlı pensler

Tanımlama	DGUI mm	DFC mm	DCLC mm	LCLC mm	OAL mm	BHTA °
120 E / F 15	15	21	15	6	64	16



## Basınçlı sıkma pensi 120 E / F 15

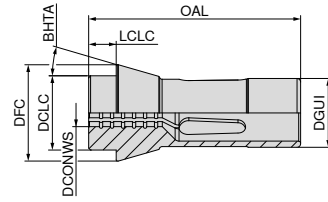


DCONWS		Enine oluklar 120 E / F 15	Pürüzsüz 120 E / F 15	Enine oluklar 120 E / F 15
mm	inch	81 003 ...	81 005 ...	81 031 ...
1,000			01000	
1,500			01500	
2,000			02000	02000 <sup>1)</sup>
2,500			02500	
3,000			03000	03000 <sup>1)</sup>
3,175	1/8			03175 <sup>1)</sup>
3,500			03500	
4,000			04000	04000 <sup>1)</sup>
4,500			04500	
5,000			05000	05000 <sup>1)</sup>
5,500			05500	
6,000		06000	06000	06000 <sup>1)</sup>
6,350	1/4			06350 <sup>1)</sup>
6,500		06500	06500	
7,000		07000	07000	07000 <sup>1)</sup>
7,500		07500	07500	
8,000		08000	08000	08000
8,500		08500	08500	
9,000		09000	09000	09000
9,500			09500	
10,000		10000	10000	10000
10,500		10500	10500	
11,000		11000	11000	11000
11,500		11500	11500	
12,000		12000	12000	

1) enine oluklar olmadan

## Basınçlı pensler

Tanımlama	DGUI mm	DFC mm	DCLC mm	LCLC mm	OAL mm	BHTA °
F 16 / 1212 E	16	21	16	6	64	16



## Basınçlı sıkma pensi F 16 / 1212 E



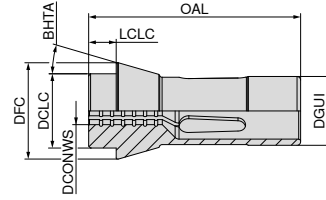
Enine oluklar  
F 16 / 1212 E

Pürüzsüz  
F 16 / 1212 E

DCONWS mm	81 019 ...	81 021 ...
1,0		01000
1,5		01500
2,0		02000
2,5		02500
3,0		03000
3,5		03500
4,0		04000
4,5		04500
5,0		05000
5,5		05500
6,0	06000	06000
6,5	06500	06500
7,0	07000	07000
7,5	07500	07500
8,0	08000	08000
8,5	08500	08500
9,0	09000	09000
9,5	09500	09500
10,0	10000	10000
10,5	10500	10500
11,0	11000	11000
11,5	11500	11500
12,0	12000	12000
12,5	12500	12500
13,0	13000	13000

## Basınçlı pensler

Tanımlama	DGUI mm	DFC mm	DCLC mm	LCLC mm	OAL mm	BHTA °
136 E / F 20-201	20	26	19	5	54	15



## Basınçlı sıkma pensi 136 E / F 20-201

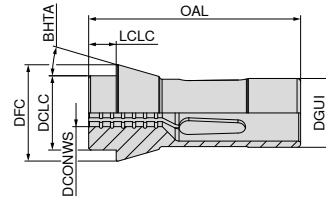


DCONWS mm	Enine oluklar 136 E / F 20-201	Pürüzsüz 136 E / F 20-201
	81 007 ...	81 009 ...
1,0		01000
1,5		01500
2,0		02000
2,5		02500
3,0		03000
3,5		03500
4,0		04000
4,5		04500
5,0		05000
5,5		05500
6,0	06000	06000
6,5	06500	06500
7,0	07000	07000
7,5	07500	07500
8,0	08000	08000
8,5	08500	08500
9,0	09000	09000
9,5	09500	09500
10,0	10000	10000
10,5	10500	10500
11,0	11000	11000
11,5	11500	11500
12,0	12000	12000
12,5	12500	12500
13,0	13000	13000
13,5	13500	13500
14,0	14000	14000
14,5	14500	14500
15,0	15000	15000
15,5	15500	15500
16,0	16000	16000

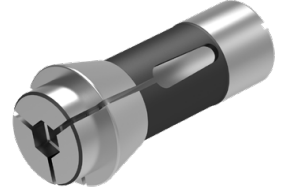


## Basınçlı pensler

Tanımlama	DGUI mm	DFC mm	DCLC mm	LCLC mm	OAL mm	BHTA °
138 E / F20-87	20	28	21	7	67	16



## Basınçlı sıkma pensi 138 E / F 20-87

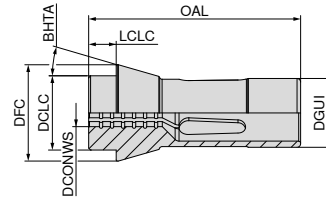


DCONWS mm	DCONWS inch	● Enine oluklar 138 E / F20-87	● Pürüzsüz 138 E / F20-87	● Enine oluklar 138 E / F20-87
		81 011 ...	81 013 ...	81 026 ...
1,00			01000	
1,50			01500	
2,00			02000	02000 <sup>1)</sup>
2,50			02500	
3,00			03000	03000 <sup>1)</sup>
3,50			03500	
4,00			04000	04000 <sup>1)</sup>
4,50			04500	
5,00			05000	05000 <sup>1)</sup>
5,50			05500	
6,00		06000	06000	06000 <sup>1)</sup>
6,35	1/4			06350 <sup>1)</sup>
6,50		06500	06500	
7,00		07000	07000	07000 <sup>1)</sup>
7,50		07500	07500	
8,00		08000	08000	08000
8,50		08500	08500	
9,00		09000	09000	09000
9,50		09500	09500	
10,00		10000	10000	10000
10,50		10500	10500	
11,00		11000	11000	11000
11,50		11500	11500	
12,00		12000	12000	12000
12,50		12500	12500	
13,00		13000	13000	13000
13,50		13500	13500	
14,00		14000	14000	14000
14,50		14500	14500	
15,00		15000	15000	
15,50		15500	15500	
16,00		16000	16000	

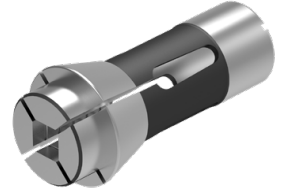
1) enine oluklar olmadan

## Basınçlı pensler

Tanımlama	DGUI mm	DFC mm	DCLC mm	LCLC mm	OAL mm	BHTA °
145 E / F 25	25	35	27	10	77	16



## Basınçlı sıkma pensi 145 E / F 25



DCONWS mm	DCONWS inch	●	●	◊	■
		Enine oluklar 145 E / F 25	Pürüzsüz 145 E / F 25	Enine oluklar 145 E / F 25	Enine oluklar 145 E / F 25
		81 015 ...	81 017 ...	81 027 ...	81 029 ...
1,500			01500		
1,501 - 1,999			xxxxx <sup>2)</sup>		
2,000			02000	02000 <sup>1)</sup>	02000 <sup>1)</sup>
2,001 - 2,499			xxxxx <sup>2)</sup>		
2,500			02500		
2,501 - 2,999			xxxxx <sup>2)</sup>		
3,000			03000	03000 <sup>1)</sup>	03000 <sup>1)</sup>
3,001 - 3,499			xxxxx <sup>2)</sup>		
3,500			03500		
3,501 - 3,999			xxxxx <sup>2)</sup>		
4,000			04000	04000 <sup>1)</sup>	04000 <sup>1)</sup>
4,001 - 4,499			xxxxx <sup>2)</sup>		
4,500			04500		
4,501 - 4,999			xxxxx <sup>2)</sup>		
5,000			05000	05000 <sup>1)</sup>	05000 <sup>1)</sup>
5,001 - 5,499			xxxxx <sup>2)</sup>		
5,500			05500		
5,501 - 5,999			xxxxx <sup>2)</sup>		
6,000		06000	06000	06000 <sup>1)</sup>	06000 <sup>1)</sup>
6,001 - 6,349		xxxxx <sup>2)</sup>			
6,350	1/4	06350	06350	06350 <sup>1)</sup>	
6,351 - 6,499		xxxxx <sup>2)</sup>			
6,500		06500	06500		
6,501 - 6,999		xxxxx <sup>2)</sup>			
7,000		07000	07000	07000 <sup>1)</sup>	07000 <sup>1)</sup>
7,001 - 7,499		xxxxx <sup>2)</sup>			
7,500		07500	07500		
7,501 - 7,937		xxxxx <sup>2)</sup>			
7,938	5/16	07938	07938		
7,939 - 7,999		xxxxx <sup>2)</sup>			
8,000		08000	08000	08000	08000
8,001 - 8,499		xxxxx <sup>2)</sup>			
8,500		08500	08500		
8,501 - 8,999		xxxxx <sup>2)</sup>			
9,000		09000	09000	09000	09000
9,001 - 9,499		xxxxx <sup>2)</sup>			
9,500		09500	09500		
9,501 - 9,999		xxxxx <sup>2)</sup>			
10,000		10000	10000	10000	10000
10,001 - 10,499		xxxxx <sup>2)</sup>			
10,500		10500	10500		
10,501 - 10,999		xxxxx <sup>2)</sup>			
11,000		11000	11000	11000	11000
11,001 - 11,112		xxxxx <sup>2)</sup>			

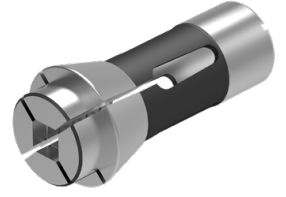
1) enine oluklar olmadan

2) Stokta mevcut değildir, iade edilemez veya değiştirilemez. / Teslim süresi 7 iş günü



.xxxx için sipariş sırasında lütfen istediğiniz çapı belirtin (örn. Ø 6,789 – Sipariş No. 81 015 06789)!

## Basınçlı sıkma pensi 145 E / F 25



DCONWS mm	DCONWS inch	●	●	⬡	■
		Enine oluklar 145 E / F 25	Pürüzsüz 145 E / F 25	Enine oluklar 145 E / F 25	Enine oluklar 145 E / F 25
		81 015 ...	81 017 ...	81 027 ...	81 029 ...
11,113	7/16	11113	11113		
11,114 - 11,499		xxxxx <sup>2)</sup>			
11,500		11500	11500		
11,501 - 11,999		xxxxx <sup>2)</sup>			
12,000		12000	12000	12000	12000
12,001 - 12,499		xxxxx <sup>2)</sup>			
12,500		12500	12500		
12,501 - 12,699		xxxxx <sup>2)</sup>			
12,700	1/2	12700	12700	12700	
12,701 - 12,999		xxxxx <sup>2)</sup>			
13,000		13000	13000	13000	13000
13,001 - 13,499		xxxxx <sup>2)</sup>			
13,500		13500	13500		
13,501 - 13,999		xxxxx <sup>2)</sup>			
14,000		14000	14000	14000	14000
14,001 - 14,499		xxxxx <sup>2)</sup>			
14,500		14500	14500		
14,501 - 14,999		xxxxx <sup>2)</sup>			
15,000		15000	15000	15000	15000
15,001 - 15,499		xxxxx <sup>2)</sup>			
15,500		15500	15500		
15,501 - 15,999		xxxxx <sup>2)</sup>			
16,000		16000	16000	16000	
16,001 - 16,499		xxxxx <sup>2)</sup>			
16,500		16500	16500		
16,501 - 16,999		xxxxx <sup>2)</sup>			
17,000		17000	17000	17000	
17,001 - 17,499		xxxxx <sup>2)</sup>			
17,500		17500	17500		
17,501 - 17,999		xxxxx <sup>2)</sup>			
18,000		18000	18000	18000	
18,001 - 18,499		xxxxx <sup>2)</sup>			
18,500		18500	18500		
18,501 - 18,999		xxxxx <sup>2)</sup>			
19,000		19000	19000	19000	
19,001 - 19,049		xxxxx <sup>2)</sup>			
19,050	3/4	19050			
19,051 - 19,499		xxxxx <sup>2)</sup>			
19,500		19500	19500		
19,501 - 19,999		xxxxx <sup>2)</sup>			
20,000		20000	20000		

1) enine oluklar olmadan

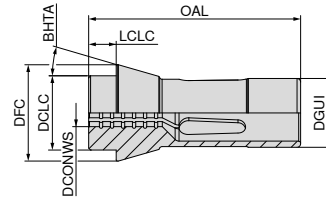
2) Stokta mevcut değildir, iade edilemez veya değiştirilemez. / Teslim süresi 7 iş günü



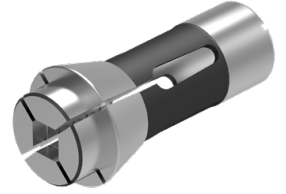
.xxxx için sipariş sırasında lütfen istediğiniz çapı belirtin (örn. Ø 6,789 – Sipariş No. 81 015 06789)!

## Basınçlı pensler

Tanımlama	DGUI mm	DFC mm	DCLC mm	LCLC mm	OAL mm	BHTA °
F 37 / 1536 E	37	47	40	10	92	16



## Basınçlı sıkma pensi F 37 / 1536 E



DCONWS mm	DCONWS inch	Enine oluklar F 37 / 1536 E	Pürüzsüz F 37 / 1536 E	Enine oluklar F 37 / 1536 E	Enine oluklar F 37 / 1536 E
DCONWS mm	DCONWS inch	81 023 ...	81 025 ...	81 028 ...	81 030 ...
1,000			01000		
1,001 - 1,499			xxxxx <sup>2)</sup>		
1,500			01500		
1,501 - 1,999			xxxxx <sup>2)</sup>		
2,000			02000		
2,001 - 2,499			xxxxx <sup>2)</sup>		
2,500			02500		
2,501 - 2,999			xxxxx <sup>2)</sup>		
3,000			03000	03000 <sup>1)</sup>	03000 <sup>1)</sup>
3,001 - 3,499			xxxxx <sup>2)</sup>		
3,500			03500		
3,501 - 3,999			xxxxx <sup>2)</sup>		
4,000			04000	04000 <sup>1)</sup>	04000 <sup>1)</sup>
4,001 - 4,499			xxxxx <sup>2)</sup>		
4,500			04500		
4,501 - 4,999			xxxxx <sup>2)</sup>		
5,000			05000	05000 <sup>1)</sup>	05000 <sup>1)</sup>
5,001 - 5,499			xxxxx <sup>2)</sup>		
5,500			05500		
5,501 - 5,999			xxxxx <sup>2)</sup>		
6,000		06000	06000	06000 <sup>1)</sup>	06000 <sup>1)</sup>
6,001 - 6,349		xxxxx <sup>2)</sup>			
6,350	1/4	06350	06350	06350 <sup>1)</sup>	06350 <sup>1)</sup>
6,351 - 6,499		xxxxx <sup>2)</sup>			
6,500		06500	06500		
6,501 - 6,999		xxxxx <sup>2)</sup>			
7,000		07000	07000	07000 <sup>1)</sup>	07000 <sup>1)</sup>
7,001 - 7,499		xxxxx <sup>2)</sup>			
7,500		07500	07500		
7,501 - 7,999		xxxxx <sup>2)</sup>			
8,000		08000	08000	08000	08000
8,001 - 8,499		xxxxx <sup>2)</sup>			
8,500		08500	08500		
8,501 - 8,999		xxxxx <sup>2)</sup>			
9,000		09000	09000	09000	09000
9,001 - 9,499		xxxxx <sup>2)</sup>			
9,500		09500	09500		
9,501 - 9,524		xxxxx <sup>2)</sup>			
9,525	3/8	09525			
9,526 - 9,999		xxxxx <sup>2)</sup>			
10,000		10000	10000	10000	10000
10,001 - 10,499		xxxxx <sup>2)</sup>			
10,500		10500	10500		
10,501 - 10,999		xxxxx <sup>2)</sup>			

1) enine oluklar olmadan

2) Stokta mevcut değildir, iade edilemez veya değiştirilemez. / Teslim süresi 7 iş günü



.xxxx için sipariş sırasında lütfen istediğiniz çapı belirtin (örn. Ø 6,789 – Sipariş No. 81 023 06789)!

## Basınçlı sıkma pensi F 37 / 1536 E



DCONWS mm	DCONWS inch	●	●	⬡	■
		Enine oluklar F 37 / 1536 E	Pürüzsüz F 37 / 1536 E	Enine oluklar F 37 / 1536 E	Enine oluklar F 37 / 1536 E
		81 023 ...	81 025 ...	81 028 ...	81 030 ...
11,000		11000	11000	11000	11000
11,001 - 11,499		xxxxx <sup>2)</sup>			
11,500		11500	11500		
11,501 - 11,999		xxxxx <sup>2)</sup>			
12,000		12000	12000	12000	12000
12,001 - 12,499		xxxxx <sup>2)</sup>			
12,500		12500	12500		
12,501 - 12,699		xxxxx <sup>2)</sup>			
12,700	1/2	12700	12700	12700	12700
12,701 - 12,999		xxxxx <sup>2)</sup>			
13,000		13000	13000	13000	13000
13,001 - 13,499		xxxxx <sup>2)</sup>			
13,500		13500	13500		
13,501 - 13,999		xxxxx <sup>2)</sup>			
14,000		14000	14000	14000	14000
14,001 - 14,499		xxxxx <sup>2)</sup>			
14,500		14500	14500		
14,501 - 14,999		xxxxx <sup>2)</sup>			
15,000		15000	15000	15000	15000
15,001 - 15,499		xxxxx <sup>2)</sup>			
15,500		15500	15500		
15,501 - 15,999		xxxxx <sup>2)</sup>			
16,000		16000	16000	16000	16000
16,001 - 16,499		xxxxx <sup>2)</sup>			
16,500		16500	16500		
16,501 - 16,999		xxxxx <sup>2)</sup>			
17,000		17000	17000	17000	17000
17,001 - 17,499		xxxxx <sup>2)</sup>			
17,500		17500	17500		
17,501 - 17,999		xxxxx <sup>2)</sup>			
18,000		18000	18000	18000	18000
18,001 - 18,499		xxxxx <sup>2)</sup>			
18,500		18500	18500		
18,501 - 18,999		xxxxx <sup>2)</sup>			
19,000		19000	19000	19000	19000
19,001 - 19,049		xxxxx <sup>2)</sup>			
19,050	3/4	19050	19050		
19,051 - 19,499		xxxxx <sup>2)</sup>			
19,500		19500	19500		
19,501 - 19,999		xxxxx <sup>2)</sup>			
20,000		20000	20000	20000	20000
20,001 - 20,499		xxxxx <sup>2)</sup>			
20,500		20500	20500		
20,501 - 20,999		xxxxx <sup>2)</sup>			
21,000		21000	21000	21000	21000
21,001 - 21,499		xxxxx <sup>2)</sup>			
21,500		21500	21500		
21,501 - 21,999		xxxxx <sup>2)</sup>			
22,000		22000	22000	22000	22000
22,001 - 22,224		xxxxx <sup>2)</sup>			
22,225	7/8	22225			
22,226 - 22,499		xxxxx <sup>2)</sup>			
22,500		22500	22500		
22,501 - 22,999		xxxxx <sup>2)</sup>			
23,000		23000	23000	23000	23000

1) enine oluklar olmadan

2) Stokta mevcut değildir, iade edilemez veya değiştirilemez. / Teslim süresi 7 iş günü



...xxxx için sipariş sırasında lütfen istediğiniz çapı belirtin (örn. Ø 6,789 – Sipariş No. 81 023 06789)!

## Basınçlı sıkma pensi F 37 / 1536 E



DCONWS mm	DCONWS inch	●	●	⬡	■
		Enine oluklar F 37 / 1536 E	Pürüzsüz F 37 / 1536 E	Enine oluklar F 37 / 1536 E	Enine oluklar F 37 / 1536 E
		81 023 ...	81 025 ...	81 028 ...	81 030 ...
23,001 - 23,499		xxxxx <sup>2)</sup>			
23,500		23500	23500		
23,501 - 23,999		xxxxx <sup>2)</sup>			
24,000		24000	24000	24000	
24,001 - 24,499		xxxxx <sup>2)</sup>			
24,500		24500	24500		
24,501 - 24,999		xxxxx <sup>2)</sup>			
25,000		25000	25000	25000	
25,001 - 25,499		xxxxx <sup>2)</sup>			
25,400	1/1	xxxxx <sup>2)</sup>		25400	
25,500		25500	25500		
25,501 - 25,999		xxxxx <sup>2)</sup>			
26,000		26000	26000	26000	
26,001 - 26,499		xxxxx <sup>2)</sup>			
26,500		26500	26500		
26,501 - 26,999		xxxxx <sup>2)</sup>			
27,000		27000	27000	27000	
27,001 - 27,499		xxxxx <sup>2)</sup>			
27,500		27500	27500		
27,501 - 27,999		xxxxx <sup>2)</sup>			
28,000		28000	28000		
28,001 - 28,499		xxxxx <sup>2)</sup>			
28,500		28500	28500		
28,501 - 28,999		xxxxx <sup>2)</sup>			
29,000		29000	29000		
29,001 - 29,499		xxxxx <sup>2)</sup>			
29,500		29500	29500		
29,501 - 29,999		xxxxx <sup>2)</sup>			
30,000		30000	30000		
30,001 - 30,499		xxxxx <sup>2)</sup>			
30,500		30500	30500		
30,501 - 30,999		xxxxx <sup>2)</sup>			
31,000		31000	31000		
31,001 - 31,499		xxxxx <sup>2)</sup>			
31,500		31500	31500		
31,501 - 31,999		xxxxx <sup>2)</sup>			
32,000		32000	32000		

1) enine oluklar olmadan


2) Stokta mevcut değildir, iade edilemez veya değiştirilemez. / Teslim süresi 7 iş günü




.xxxx için sipariş sırasında lütfen istediğiniz çapı belirtin (örn. Ø 6,789 – Sipariş No. 81 023 06789)!

## Kavrama penslerine genel bakış

Standart	mm cinsinden sıkma çapı aralığı	Profil	Versiyon	Sayfa
116 E / F 13	Ø 1,0 – 8,0	○	düz	15
120 E / F 15	Ø 1,0 – 8,0	○	düz	15
F 16 / 1212 E	Ø 1,0 – 9,0	○	düz	16
138 E / F 20-87	Ø 1,0 – 12,0	○	düz	16
136 E / F 20-201	Ø 1,0 – 14,0	○	düz	17
145 E / F 25	Ø 1,0 – 20,0	○	düz	18
F 37 / 1536 E	Ø 1,0 – 28,0	○	düz	19

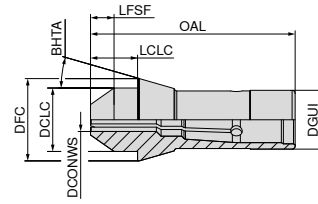
 Daha fazla profil şekli ve boyutların yanı sıra genişletilmiş seçenekler istek üzerine mevcuttur.

 Özel olarak uyarlanmış çözümler hakkında bize bir soru göndermek istemeniz halinde, ana sayfamızdaki indirme alanımızda ayrıntılı bir anket formu bulabilirsiniz. Lütfen dikkatli bir şekilde doldurun ve bastırdıktan sonra e-posta veya faks ile gönderin. → [cuttingtools.ceratizit.com/tr/tr/indirme.html](https://cuttingtools.ceratizit.com/tr/tr/indirme.html)

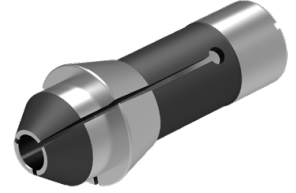
Lütfen doldurulmuş formu e-posta ile [info.turkey@ceratizit.com](mailto:info.turkey@ceratizit.com) adresine gönderin.

## Kavrama pensleri

Tanımlama	DGUI mm	DFC mm	DCLC mm	LCLC mm	OAL mm	BHTA °	LFSF mm
116 E / F 13	13	19	13	12	70	16	6
120 E / F 15	15	21	15	13	71	16	7
120 E / F 15	15	21	15	15	73	16	9



## Çıkıntılı sıkma pens 116 E / F 13

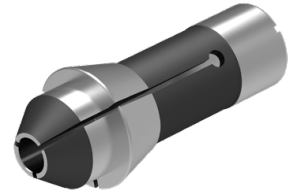


●  
Pürüzsüz  
116 E / F 13

81 001 ...

DCONWS mm	
1	01000
2	02000
3	03000
4	04000
5	05000
6	06000
7	07000

## Çıkıntılı sıkma pens 120 E / F 15



●  
Pürüzsüz  
120 E / F 15  
LFSF = 7 mm

●  
Pürüzsüz  
120 E / F 15  
LFSF = 9 mm

81 004 ...

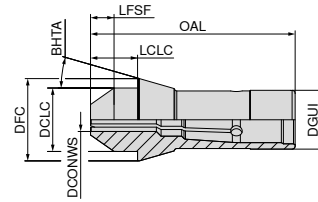
81 006 ...

DCONWS mm		
1	01000	01000
2	02000	02000
3	03000	03000
4	04000	04000
5	05000	05000
6	06000	06000
7	07000	07000
8	08000	08000

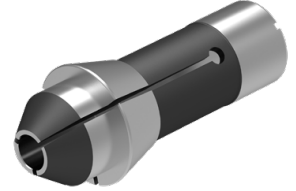


## Kavrama pensleri

Tanımlama	DGUI mm	DFC mm	DCLC mm	LCLC mm	OAL mm	BHTA °	LFSF mm
F 16 / 1212 E	16	21	16	13	71	16	7
F 16 / 1212 E	16	21	16	15	73	16	9
138 E / F20-87	20	28	21	15	78	16	8
138 E / F20-87	20	28	21	20	80	16	13



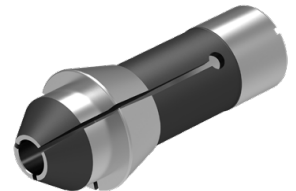
## Çıkıntılı sıkma penssi F 16 / 1212 E

DCONWS  
mm

1
2
3
4
5
6
7
8
9

Pürüzsüz F 16 / 1212 E LFSF = 7 mm	Pürüzsüz F 16 / 1212 E LFSF = 9 mm
<b>81 020 ...</b>	<b>81 022 ...</b>
01000	01000
02000	02000
03000	03000
04000	04000
05000	05000
06000	06000
07000	07000
08000	08000
09000	09000

## Çıkıntılı sıkma penssi 138 E / F 20-87

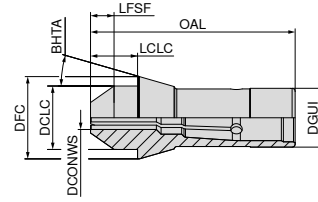
DCONWS  
mm

1
2
3
4
5
6
7
8
9
10
11
12

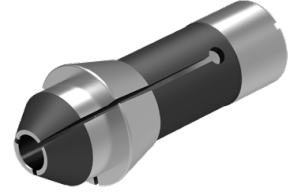
Pürüzsüz 138 E / F20-87 LFSF = 8 mm	Pürüzsüz 138 E / F20-87 LFSF = 13 mm
<b>81 012 ...</b>	<b>81 014 ...</b>
01000	01000
02000	02000
03000	03000
04000	04000
05000	05000
06000	06000
07000	07000
08000	08000
09000	09000
10000	10000
11000	11000
12000	12000

## Kavrama pensleri

Tanımlama	DGUI mm	DFC mm	DCLC mm	LCLC mm	OAL mm	BHTA °	LFSF mm
136 E / F 20-201	20	26	19	13	62	15	8
136 E / F 20-201	20	26	19	15	64	15	10



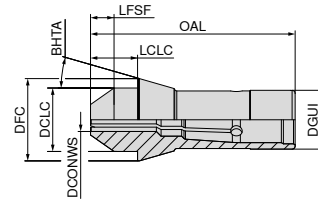
## Çıkıntılı sıkma pensi 136 E / F 20-201



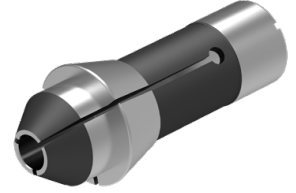
DCONWS mm	Pürüzsüz	
	136 E / F 20-201 LFSF = 8 mm	136 E / F 20-201 LFSF = 10 mm
	81 008 ...	81 010 ...
1	01000	01000
2	02000	02000
3	03000	03000
4	04000	04000
5	05000	05000
6	06000	06000
7	07000	07000
8	08000	08000
9	09000	09000
10	10000	10000
11	11000	11000
12	12000	12000
13		13000
14		14000

## Kavrama pensleri

Tanımlama	DGUI mm	DFC mm	DCLC mm	LCLC mm	OAL mm	BHTA °	LFSF mm
145 E / F 25	25	35	27	20	87	16	10
145 E / F 25	25	35	27	25	92	16	15



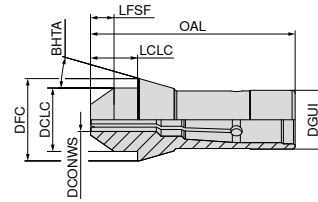
## Çıkıntılı sıkma pensi 145 E / F 25



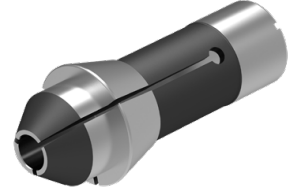
DCONWS mm	Pürüzsüz 145 E / F 25	
	LFSF = 10 mm	LFSF = 15 mm
	81 016 ...	81 018 ...
1	01000	01000
2	02000	02000
3	03000	03000
4	04000	04000
5	05000	05000
6	06000	06000
7	07000	07000
8	08000	08000
9	09000	09000
10	10000	10000
11	11000	11000
12	12000	12000
13	13000	13000
14	14000	14000
15	15000	15000
16	16000	16000
17	17000	17000
18	18000	18000
19	19000	19000
20	20000	20000

## Kavrama pensleri

Tanımlama	DGUI mm	DFC mm	DCLC mm	LCLC mm	OAL mm	BHTA °	LFSF mm
F 37 / 1536 E	37	47	40	25	107	16	15



## Çıkıntılı sıkma pensi F 37 / 1536 E



●  
Pürüzsüz  
F 37 / 1536 E

81 024 ...


DCONWS mm	
1	01000
2	02000
3	03000
4	04000
5	05000
6	06000
7	07000
8	08000
9	09000
10	10000
11	11000
12	12000
13	13000
14	14000
15	15000
16	16000
17	17000
18	18000
19	19000
20	20000
21	21000
22	22000
23	23000
24	24000
25	25000
26	26000
27	27000
28	28000

## Ayarlanabilir kılavuz kovanlara genel bakış

Standart	mm cinsinden kılavuz çapı aralığı	Profil	Versiyon	Sayfa
I353	Ø 1,0 - 10,5	○	Karbür eklenti	21
F853	Ø 1,0 - 13,0	○	Karbür eklenti	22
F391	Ø 1,0 - 18,0	○	Karbür eklenti	23
F605	Ø 1,0 - 17,0	○	Karbür eklenti	24
T223	Ø 1,0 - 22,0	○	Karbür eklenti	25
	SW 2,0 - 11,0	⬡	Karbür eklenti	25
	SW 2,0 - 15,0	■	Karbür eklenti	25
I357	Ø 2,0 - 22,0	○	Karbür eklenti	26
T227	Ø 1,0 - 25,0	○	Karbür eklenti	27
T229	Ø 2,0 - 32,0	○	Karbür eklenti	28
	SW 2,0 - 14,0	⬡	Karbür eklenti	28

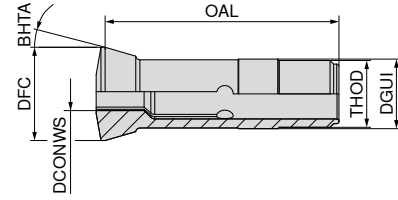
## GBE esnek kılavuz kovanlara genel bakış

GBE 28	Ø 2,0 - 15,0	○	29
GBE 42	Ø 2,0 - 15,0	○	30

 Daha fazla profil şekli ve boyutların yanı sıra genişletilmiş seçenekler istek üzerine mevcuttur.

## Ayarlanabilir kılavuz kovanlar

Tanımlama	DGUI mm	DFC mm	OAL mm	BHTA °	THOD
I 353	16	19,5	56,79	16	M14 x 1



## Ayarlanabilir kılavuz burç I 353

- ▲ star\* CNC kayar otomat tornalar için
- ▲ karbür bağlama parçalı



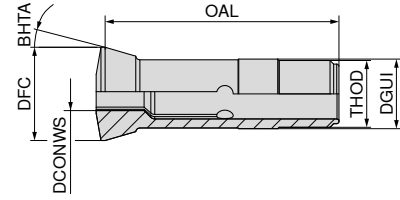
I 353

81 035 ...

DCONWS mm	
1,0	01000
1,5	01500
2,0	02000
2,5	02500
3,0	03000
3,5	03500
4,0	04000
4,5	04500
5,0	05000
5,5	05500
6,0	06000
6,5	06500
7,0	07000
7,5	07500
8,0	08000
8,5	08500
9,0	09000
9,5	09500
10,0	10000
10,5	10500

## Ayarlanabilir kılavuz kovanlar

Tanımlama	DGUI mm	DFC mm	OAL mm	BHTA °	THOD
F 853	18	22	60	30	M16 x 1



## Ayarlanabilir kılavuz burç F 853

▲ karbür bağlama parçalı

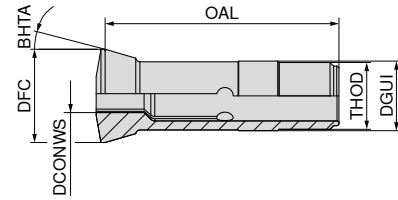
●  
F 853

81 034 ...

DCONWS mm	
1,0	01000
1,5	01500
2,0	02000
2,5	02500
3,0	03000
3,5	03500
4,0	04000
4,5	04500
5,0	05000
5,5	05500
6,0	06000
6,5	06500
7,0	07000
7,5	07500
8,0	08000
8,5	08500
9,0	09000
9,5	09500
10,0	10000
10,5	10500
11,0	11000
11,5	11500
12,0	12000
12,5	12500
13,0	13000

## Ayarlanabilir kılavuz kovanlar

Tanımlama	DGUI mm	DFC mm	OAL mm	BHTA °	THOD
F 391	22	29	68	16	M22 x 1



## Ayarlanabilir kılavuz burç F 391

▲ karbür bağlama parçalı



F 391

81 032 ...

DCONWS mm	DCONWS inch	81 032 ...
1,000		01000
1,001 - 1,499		xxxxx <sup>1)</sup>
1,500		01500
1,501 - 1,999		xxxxx <sup>1)</sup>
2,000		xxxxx <sup>1)</sup>
2,001 - 2,499		xxxxx <sup>1)</sup>
2,500		02500
2,501 - 2,999		xxxxx <sup>1)</sup>
3,000		03000
3,001 - 3,499		xxxxx <sup>1)</sup>
3,500		03500
3,501 - 3,999		xxxxx <sup>1)</sup>
4,000		04000
4,001 - 4,499		xxxxx <sup>1)</sup>
4,500		04500
4,501 - 4,999		xxxxx <sup>1)</sup>
5,000		05000
5,001 - 5,499		xxxxx <sup>1)</sup>
5,500		05500
5,501 - 5,999		xxxxx <sup>1)</sup>
6,000		06000
6,001 - 6,349		xxxxx <sup>1)</sup>
6,350	1/4	06350
6,351 - 6,499		xxxxx <sup>1)</sup>
6,500		06500
6,501 - 6,999		xxxxx <sup>1)</sup>
7,000		07000
7,001 - 7,499		xxxxx <sup>1)</sup>
7,500		07500
7,501 - 7,999		xxxxx <sup>1)</sup>
8,000		08000
8,001 - 8,499		xxxxx <sup>1)</sup>
8,500		08500
8,501 - 8,999		xxxxx <sup>1)</sup>
9,000		09000
9,001 - 9,499		xxxxx <sup>1)</sup>
9,500		09500
9,501 - 9,999		xxxxx <sup>1)</sup>
10,000		10000
10,001 - 10,499		xxxxx <sup>1)</sup>
10,500		10500
10,501 - 10,999		xxxxx <sup>1)</sup>
11,000		11000
11,001 - 11,499		xxxxx <sup>1)</sup>
11,500		11500
11,501 - 11,999		xxxxx <sup>1)</sup>
12,000		12000
12,001 - 12,499		xxxxx <sup>1)</sup>
12,500		12500
12,501 - 12,699		xxxxx <sup>1)</sup>

81 032 ...

DCONWS mm	DCONWS inch	81 032 ...
12,700	1/2	12700
12,701 - 12,999		xxxxx <sup>1)</sup>
13,000		13000
13,001 - 13,499		xxxxx <sup>1)</sup>
13,500		13500
13,501 - 13,999		xxxxx <sup>1)</sup>
14,000		14000
14,001 - 14,499		xxxxx <sup>1)</sup>
14,500		14500
14,501 - 14,999		xxxxx <sup>1)</sup>
15,000		15000
15,001 - 15,499		xxxxx <sup>1)</sup>
15,500		15500
15,501 - 15,999		xxxxx <sup>1)</sup>
16,000		16000
16,001 - 16,499		xxxxx <sup>1)</sup>
16,500		16500
16,501 - 16,999		xxxxx <sup>1)</sup>
17,000		17000
17,001 - 17,499		xxxxx <sup>1)</sup>
17,500		17500
17,501 - 17,999		xxxxx <sup>1)</sup>
18,000		18000

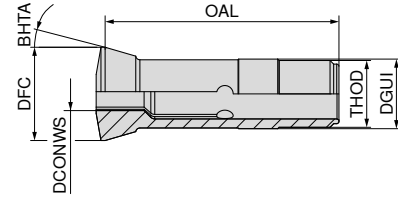
1) Stokta mevcut değildir, iade edilemez veya değiştirilemez. / Teslim süresi 7 iş günü

xxxx için sipariş sırasında lütfen istediğiniz çapı belirtin  
(örn. Ø 6,789 – Sipariş No. 81 032 06789)!



## Ayarlanabilir kılavuz kovanlar

Tanımlama	DGUI mm	DFC mm	OAL mm	BHTA °	THOD M24 x 1
F 605	24	29,5	61	30	M24 x 1



## Ayarlanabilir kılavuz burç F 605

▲ karbür bağlama parçalı



F 605

81 033 ...

DCONWS mm	DCONWS inch	81 033 ...
1,000		01000
1,001 - 1,499		xxxxx <sup>1)</sup>
1,500		01500
1,501 - 1,999		xxxxx <sup>1)</sup>
2,000		02000
2,001 - 2,499		xxxxx <sup>1)</sup>
2,500		02500
2,501 - 2,999		xxxxx <sup>1)</sup>
3,000		03000
3,001 - 3,174		xxxxx <sup>1)</sup>
3,175	1/8	03175
3,176 - 3,499		xxxxx <sup>1)</sup>
3,500		03500
3,501 - 3,999		xxxxx <sup>1)</sup>
4,000		04000
4,001 - 4,499		xxxxx <sup>1)</sup>
4,500		04500
4,501 - 4,762		xxxxx <sup>1)</sup>
4,763	3/16	04763
4,764 - 4,999		xxxxx <sup>1)</sup>
5,000		05000
5,001 - 5,499		xxxxx <sup>1)</sup>
5,500		05500
5,501 - 5,999		xxxxx <sup>1)</sup>
6,000		06000
6,001 - 6,349		xxxxx <sup>1)</sup>
6,350	1/4	06350
6,351 - 6,499		xxxxx <sup>1)</sup>
6,500		06500
6,501 - 6,999		xxxxx <sup>1)</sup>
7,000		07000
7,001 - 7,499		xxxxx <sup>1)</sup>
7,500		07500
7,501 - 7,999		xxxxx <sup>1)</sup>
8,000		08000
8,001 - 8,499		xxxxx <sup>1)</sup>
8,500		08500
8,501 - 8,999		xxxxx <sup>1)</sup>
9,000		09000
9,001 - 9,499		xxxxx <sup>1)</sup>
9,500		09500
9,501 - 9,999		xxxxx <sup>1)</sup>
10,000		10000
10,001 - 10,499		xxxxx <sup>1)</sup>
10,500		10500
10,501 - 10,999		xxxxx <sup>1)</sup>
11,000		11000
11,001 - 11,499		xxxxx <sup>1)</sup>
11,500		11500
11,501 - 11,999		xxxxx <sup>1)</sup>

81 033 ...

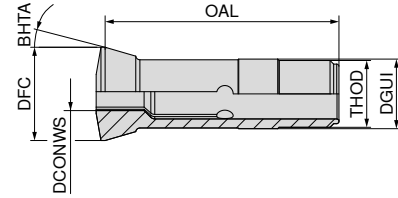
DCONWS mm	DCONWS inch	81 033 ...
12,000		12000
12,001 - 12,499		xxxxx <sup>1)</sup>
12,500		12500
12,501 - 12,699		xxxxx <sup>1)</sup>
12,700	1/2	12700
12,701 - 12,999		xxxxx <sup>1)</sup>
13,000		13000
13,001 - 13,499		xxxxx <sup>1)</sup>
13,500		13500
13,501 - 13,999		xxxxx <sup>1)</sup>
14,000		14000
14,001 - 14,499		xxxxx <sup>1)</sup>
14,500		14500
14,501 - 14,999		xxxxx <sup>1)</sup>
15,000		15000
15,001 - 15,499		xxxxx <sup>1)</sup>
15,500		15500
15,501 - 15,999		xxxxx <sup>1)</sup>
16,000		16000
16,001 - 16,499		xxxxx <sup>1)</sup>
16,500		16500
16,501 - 16,999		xxxxx <sup>1)</sup>
17,000		17000

1) Stokta mevcut değildir, iade edilemez veya değiştirilemez. / Teslim süresi 7 iş günü

xxxx için sipariş sırasında lütfen istediğiniz çapı belirtin  
(örn. Ø 6,789 – Sipariş No. 81 033 06789)!

## Ayarlanabilir kılavuz kovanlar

Tanımlama	DGUI mm	DFC mm	OAL mm	BHTA °	THOD M25 x 1
T 223	28	34	82	16	M25 x 1



## Ayarlanabilir kılavuz burç T 223

▲ karbür bağlama parçalı



T 223		T 223		T 223	
81 037 ...		81 038 ...		81 039 ...	
DCONWS mm	DCONWS inch				
1,000		01000			
1,001 - 1,499		xxxxx <sup>1)</sup>			
1,500		01500			
1,501 - 1,999		xxxxx <sup>1)</sup>			
2,000		02000			
2,001 - 2,499		xxxxx <sup>1)</sup>			
2,500		02500			
2,501 - 2,999		xxxxx <sup>1)</sup>			
3,000		03000	03000		03000
3,001 - 3,499		xxxxx <sup>1)</sup>			
3,500		03500			
3,501 - 3,999		xxxxx <sup>1)</sup>			
4,000		04000	04000		04000
4,001 - 4,499		xxxxx <sup>1)</sup>			
4,500		04500			
4,501 - 4,999		xxxxx <sup>1)</sup>			
5,000		05000	05000		05000
5,001 - 5,499		xxxxx <sup>1)</sup>			
5,500		05500			
5,501 - 5,999		xxxxx <sup>1)</sup>			
6,000		06000	06000		06000
6,001 - 6,349		xxxxx <sup>1)</sup>			
6,350	1/4	06350	06350		06350
6,351 - 6,499		xxxxx <sup>1)</sup>			
6,500		06500			
6,501 - 6,999		xxxxx <sup>1)</sup>			
7,000		07000	07000		07000
7,001 - 7,499		xxxxx <sup>1)</sup>			
7,500		07500			
7,501 - 7,999		xxxxx <sup>1)</sup>			
7,938	5/16		07938		
8,000		08000	08000		08000
8,001 - 8,499		xxxxx <sup>1)</sup>			
8,500		08500			
8,501 - 8,999		xxxxx <sup>1)</sup>			
9,000		09000	09000		09000
9,001 - 9,499		xxxxx <sup>1)</sup>			
9,500		09500			
9,501 - 9,999		xxxxx <sup>1)</sup>			
9,525	3/8		09525		
10,000		10000	10000		10000
10,001 - 10,499		xxxxx <sup>1)</sup>			
10,500		10500			
10,501 - 10,999		xxxxx <sup>1)</sup>			
11,000		11000	11000		11000
11,001 - 11,499		xxxxx <sup>1)</sup>			
11,500		11500			
11,501 - 11,999		xxxxx <sup>1)</sup>			
12,000		12000	12000		12000
12,001 - 12,499		xxxxx <sup>1)</sup>			

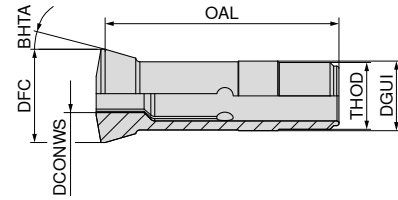
81 037 ...		81 038 ...		81 039 ...	
DCONWS mm	DCONWS inch				
12,500		12500			
12,501 - 12,699		xxxxx <sup>1)</sup>			
12,700	1/2	12700	12700		
12,701 - 12,999		xxxxx <sup>1)</sup>			
13,000		13000	13000		13000
13,001 - 13,499		xxxxx <sup>1)</sup>			
13,500		13500			
13,501 - 13,999		xxxxx <sup>1)</sup>			
14,000		14000	14000		14000
14,001 - 14,499		xxxxx <sup>1)</sup>			
14,500		14500			
14,501 - 14,999		xxxxx <sup>1)</sup>			
15,000		15000	15000		
15,001 - 15,499		xxxxx <sup>1)</sup>			
15,500		15500			
15,501 - 15,999		xxxxx <sup>1)</sup>			
16,000		16000	16000		
16,001 - 16,499		xxxxx <sup>1)</sup>			
16,500		16500			
16,501 - 16,999		xxxxx <sup>1)</sup>			
17,000		17000	17000		
17,001 - 17,499		xxxxx <sup>1)</sup>			
17,500		17500			
17,501 - 17,999		xxxxx <sup>1)</sup>			
18,000		18000			
18,001 - 18,499		xxxxx <sup>1)</sup>			
18,500		18500			
18,501 - 18,999		xxxxx <sup>1)</sup>			
19,000		19000			
19,001 - 19,499		xxxxx <sup>1)</sup>			
19,500		19500			
19,501 - 19,999		xxxxx <sup>1)</sup>			
20,000		20000			
20,001 - 20,499		xxxxx <sup>1)</sup>			
20,500		20500			
20,501 - 20,999		xxxxx <sup>1)</sup>			
21,000		21000			
21,001 - 21,499		xxxxx <sup>1)</sup>			
21,500		21500			
21,501 - 21,999		xxxxx <sup>1)</sup>			
22,000		22000			

1) Stokta mevcut değildir, iade edilemez veya değiştirilemez. / Teslim süresi 7 iş günü

xxxxx için sipariş sırasında lütfen istediğiniz çapı belirtin  
(örn. Ø 6,789 – Sipariş No. 81 037 06789)!

## Ayarlanabilir kılavuz kovanlar

Tanımlama	DGUI mm	DFC mm	OAL mm	BHTA °	THOD
I 357	28	38	81	30	M25 x 1



## Ayarlanabilir kılavuz burç I 357

▲ karbür bağlama parçalı



I 357

81 036 ...

DCONWS mm	DCONWS inch	81 036 ...
2,000		02000
2,001 - 2,499		xxxxx <sup>1)</sup>
2,500		02500
2,501 - 2,999		xxxxx <sup>1)</sup>
3,000		03000
3,001 - 3,174		xxxxx <sup>1)</sup>
3,175	1/8	03175
3,176 - 3,499		xxxxx <sup>1)</sup>
3,500		03500
3,501 - 3,999		xxxxx <sup>1)</sup>
4,000		04000
4,001 - 4,499		xxxxx <sup>1)</sup>
4,500		04500
4,501 - 4,999		xxxxx <sup>1)</sup>
5,000		05000
5,001 - 5,499		xxxxx <sup>1)</sup>
5,500		05500
5,501 - 5,999		xxxxx <sup>1)</sup>
6,000		06000
6,001 - 6,499		xxxxx <sup>1)</sup>
6,500		06500
6,501 - 6,999		xxxxx <sup>1)</sup>
7,000		07000
7,001 - 7,143		xxxxx <sup>1)</sup>
7,144	9/32	07144
7,145 - 7,499		xxxxx <sup>1)</sup>
7,500		07500
7,501 - 7,999		xxxxx <sup>1)</sup>
8,000		08000
8,001 - 8,499		xxxxx <sup>1)</sup>
8,500		08500
8,501 - 8,999		xxxxx <sup>1)</sup>
9,000		09000
9,001 - 9,499		xxxxx <sup>1)</sup>
9,500		09500
9,501 - 9,999		xxxxx <sup>1)</sup>
10,000		10000
10,001 - 10,499		xxxxx <sup>1)</sup>
10,500		10500
10,501 - 10,999		xxxxx <sup>1)</sup>
11,000		11000
11,001 - 11,499		xxxxx <sup>1)</sup>
11,500		11500
11,501 - 11,999		xxxxx <sup>1)</sup>
12,000		12000
12,001 - 12,499		xxxxx <sup>1)</sup>
12,500		12500
12,501 - 12,699		xxxxx <sup>1)</sup>
12,700	1/2	12700
12,701 - 12,999		xxxxx <sup>1)</sup>

81 036 ...

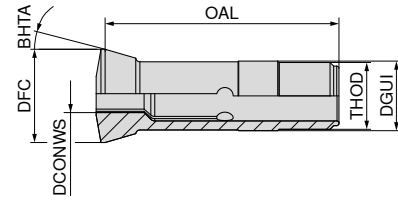
DCONWS mm	DCONWS inch	81 036 ...
13,000		13000
13,001 - 13,499		xxxxx <sup>1)</sup>
13,500		13500
13,501 - 13,999		xxxxx <sup>1)</sup>
14,000		14000
14,001 - 14,499		xxxxx <sup>1)</sup>
14,500		14500
14,501 - 14,999		xxxxx <sup>1)</sup>
15,000		15000
15,001 - 15,499		xxxxx <sup>1)</sup>
15,500		15500
15,501 - 15,999		xxxxx <sup>1)</sup>
16,000		16000
16,001 - 16,499		xxxxx <sup>1)</sup>
16,500		16500
16,501 - 16,999		xxxxx <sup>1)</sup>
17,000		17000
17,001 - 17,499		xxxxx <sup>1)</sup>
17,500		17500
17,501 - 17,999		xxxxx <sup>1)</sup>
18,000		18000
18,001 - 18,499		xxxxx <sup>1)</sup>
18,500		18500
18,501 - 18,999		xxxxx <sup>1)</sup>
19,000		19000
19,001 - 19,499		xxxxx <sup>1)</sup>
19,500		19500
19,501 - 19,999		xxxxx <sup>1)</sup>
20,000		20000
20,001 - 20,499		xxxxx <sup>1)</sup>
20,500		20500
20,501 - 20,999		xxxxx <sup>1)</sup>
21,000		21000
21,001 - 21,499		xxxxx <sup>1)</sup>
21,500		21500
21,501 - 21,999		xxxxx <sup>1)</sup>
22,000		22000

1) Stokta mevcut değildir, iade edilemez veya değiştirilemez. / Teslim süresi 7 iş günü

xxxxx için sipariş sırasında lütfen istediğiniz çapı belirtin  
(örn. Ø 6,789 – Sipariş No. 81 036 06789)!

## Ayarlanabilir kılavuz kovanlar

Tanımlama	DGUI mm	DFC mm	OAL mm	BHTA °	THOD M34 x 1
T 227	34	41	87,5	10	M34 x 1



## Ayarlanabilir kılavuz burç T 227

▲ karbür bağlama parçalı



T 227

81 040 ...

DCONWS mm	DCONWS inch	81 040 ...
1,000		01000
1,001 - 1,499		xxxxx <sup>1)</sup>
1,500		01500
1,501 - 1,999		xxxxx <sup>1)</sup>
2,000		02000
2,001 - 2,499		xxxxx <sup>1)</sup>
2,500		02500
2,501 - 2,999		xxxxx <sup>1)</sup>
3,000		03000
3,001 - 3,499		xxxxx <sup>1)</sup>
3,500		03500
3,501 - 3,999		xxxxx <sup>1)</sup>
4,000		04000
4,001 - 4,499		xxxxx <sup>1)</sup>
4,500		04500
4,501 - 4,999		xxxxx <sup>1)</sup>
5,000		05000
5,001 - 5,499		xxxxx <sup>1)</sup>
5,500		05500
5,501 - 5,999		xxxxx <sup>1)</sup>
6,000		06000
6,001 - 6,349		xxxxx <sup>1)</sup>
6,350	1/4	06350
6,351 - 6,499		xxxxx <sup>1)</sup>
6,500		06500
6,501 - 6,999		xxxxx <sup>1)</sup>
7,000		07000
7,001 - 7,499		xxxxx <sup>1)</sup>
7,500		07500
7,501 - 7,999		xxxxx <sup>1)</sup>
8,000		08000
8,001 - 8,499		xxxxx <sup>1)</sup>
8,500		08500
8,501 - 8,999		xxxxx <sup>1)</sup>
9,000		09000
9,001 - 9,499		xxxxx <sup>1)</sup>
9,500		09500
9,501 - 9,999		xxxxx <sup>1)</sup>
10,000		10000
10,001 - 10,499		xxxxx <sup>1)</sup>
10,500		10500
10,501 - 10,999		xxxxx <sup>1)</sup>
11,000		11000
11,001 - 11,499		xxxxx <sup>1)</sup>
11,500		11500
11,501 - 11,999		xxxxx <sup>1)</sup>
12,000		12000
12,001 - 12,499		xxxxx <sup>1)</sup>
12,500		12500
12,501 - 12,699		xxxxx <sup>1)</sup>
12,700	1/2	12700
12,701 - 12,999		xxxxx <sup>1)</sup>

81 040 ...

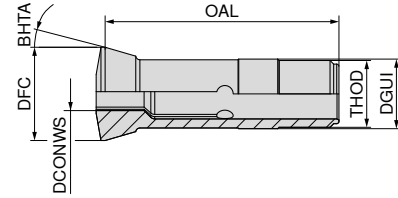
DCONWS mm	DCONWS inch	81 040 ...
13,000		13000
13,001 - 13,499		xxxxx <sup>1)</sup>
13,500		13500
13,501 - 13,999		xxxxx <sup>1)</sup>
14,000		14000
14,001 - 14,499		xxxxx <sup>1)</sup>
14,500		14500
14,501 - 14,999		xxxxx <sup>1)</sup>
15,000		15000
15,001 - 15,499		xxxxx <sup>1)</sup>
15,500		15500
15,501 - 15,999		xxxxx <sup>1)</sup>
16,000		16000
16,001 - 16,499		xxxxx <sup>1)</sup>
16,500		16500
16,501 - 16,999		xxxxx <sup>1)</sup>
17,000		17000
17,001 - 17,499		xxxxx <sup>1)</sup>
17,500		17500
17,501 - 17,999		xxxxx <sup>1)</sup>
18,000		18000
18,001 - 18,499		xxxxx <sup>1)</sup>
18,500		18500
18,501 - 18,999		xxxxx <sup>1)</sup>
19,000		19000
19,001 - 19,499		xxxxx <sup>1)</sup>
19,500		19500
19,501 - 19,999		xxxxx <sup>1)</sup>
20,000		20000
20,001 - 20,499		xxxxx <sup>1)</sup>
20,500		20500
20,501 - 20,999		xxxxx <sup>1)</sup>
21,000		21000
21,001 - 21,499		xxxxx <sup>1)</sup>
21,500		21500
21,501 - 21,999		xxxxx <sup>1)</sup>
22,000		22000
22,001 - 22,499		xxxxx <sup>1)</sup>
22,500		22500
22,501 - 22,999		xxxxx <sup>1)</sup>
23,000		23000
23,001 - 23,499		xxxxx <sup>1)</sup>
23,500		23500
23,501 - 23,999		xxxxx <sup>1)</sup>
24,000		24000
24,001 - 24,499		xxxxx <sup>1)</sup>
24,500		24500
24,501 - 24,999		xxxxx <sup>1)</sup>
25,000		25000

1) Stokta mevcut değildir, iade edilemez veya değiştirilemez. / Teslim süresi 7 iş günü

.xxxx için sipariş sırasında lütfen istediğiniz çapı belirtin  
(örn. Ø 6,789 – Sipariş No. 81 040 06789)!

## Ayarlanabilir kılavuz kovanlar

Tanımlama	DGUI mm	DFC mm	OAL mm	BHTA °	THOD M40 x 1
T 229	42	49	82	16	M40 x 1



## Ayarlanabilir kılavuz burç T 229

▲ karbür bağlama parçalı



T 229

T 229

81 041 ...

81 042 ...

DCONWS mm	DCONWS inch	81 041 ...	81 042 ...
2,000		02000	
2,001 - 2,499		xxxxx <sup>1)</sup>	
2,500		02500	
2,501 - 2,999		xxxxx <sup>1)</sup>	
3,000		03000	
3,001 - 3,499		xxxxx <sup>1)</sup>	
3,500		03500	
3,501 - 3,999		xxxxx <sup>1)</sup>	
4,000		04000	04000
4,001 - 4,499		xxxxx <sup>1)</sup>	
4,500		04500	
4,501 - 4,999		xxxxx <sup>1)</sup>	
5,000		05000	05000
5,001 - 5,499		xxxxx <sup>1)</sup>	
5,500		05500	
5,501 - 5,999		xxxxx <sup>1)</sup>	
6,000		06000	06000
6,001 - 6,349		xxxxx <sup>1)</sup>	
6,350	1/4	06350	06350
6,351 - 6,499		xxxxx <sup>1)</sup>	
6,500		06500	
6,501 - 6,999		xxxxx <sup>1)</sup>	
7,000		07000	07000
7,001 - 7,499		xxxxx <sup>1)</sup>	
7,500		07500	
7,501 - 7,999		xxxxx <sup>1)</sup>	
8,000		08000	08000
8,001 - 8,499		xxxxx <sup>1)</sup>	
8,500		08500	
8,501 - 8,999		xxxxx <sup>1)</sup>	
9,000		09000	09000
9,001 - 9,499		xxxxx <sup>1)</sup>	
9,500		09500	
9,501 - 9,524		xxxxx <sup>1)</sup>	
9,525	3/8	09525	
9,526 - 9,999		xxxxx <sup>1)</sup>	
10,000		10000	10000
10,001 - 10,499		xxxxx <sup>1)</sup>	
10,500		10500	
10,501 - 10,999		xxxxx <sup>1)</sup>	
11,000		11000	11000
11,001 - 11,499		xxxxx <sup>1)</sup>	
11,500		11500	
11,501 - 11,999		xxxxx <sup>1)</sup>	
12,000		12000	12000
12,001 - 12,499		xxxxx <sup>1)</sup>	
12,500		12500	
12,501 - 12,699		xxxxx <sup>1)</sup>	
12,700	1/2	12700	
12,701 - 12,999		xxxxx <sup>1)</sup>	
13,000		13000	13000
13,001 - 13,499		xxxxx <sup>1)</sup>	
13,500		13500	
13,501 - 13,999		xxxxx <sup>1)</sup>	
14,000		14000	14000
14,001 - 14,499		xxxxx <sup>1)</sup>	
14,500		14500	
14,501 - 14,999		xxxxx <sup>1)</sup>	
15,000		15000	15000
15,001 - 15,499		xxxxx <sup>1)</sup>	
15,500		15500	
15,501 - 15,999		xxxxx <sup>1)</sup>	
16,000		16000	16000
16,001 - 16,499		xxxxx <sup>1)</sup>	

81 041 ... 81 042 ...

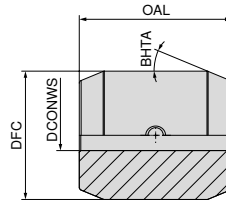
DCONWS mm	DCONWS inch	81 041 ...	81 042 ...
16,500		16500	
16,501 - 16,999		xxxxx <sup>1)</sup>	
17,000		17000	17000
17,001 - 17,499		xxxxx <sup>1)</sup>	
17,500		17500	
17,501 - 17,999		xxxxx <sup>1)</sup>	
18,000		18000	18000
18,001 - 18,499		xxxxx <sup>1)</sup>	
18,500		18500	
18,501 - 18,999		xxxxx <sup>1)</sup>	
19,000		19000	19000
19,001 - 19,049		xxxxx <sup>1)</sup>	
19,050	3/4	19050	
19,051 - 19,499		xxxxx <sup>1)</sup>	
19,500		19500	
19,501 - 19,999		xxxxx <sup>1)</sup>	
20,000		20000	20000
20,001 - 20,499		xxxxx <sup>1)</sup>	
20,500		20500	
20,501 - 20,999		xxxxx <sup>1)</sup>	
21,000		21000	21000
21,001 - 21,499		xxxxx <sup>1)</sup>	
21,500		21500	
21,501 - 21,999		xxxxx <sup>1)</sup>	
22,000		22000	22000
22,001 - 22,224		xxxxx <sup>1)</sup>	
22,225	7/8	22225	
22,226 - 22,499		xxxxx <sup>1)</sup>	
22,500		22500	
22,501 - 22,999		xxxxx <sup>1)</sup>	
23,000		23000	23000
23,001 - 23,499		xxxxx <sup>1)</sup>	
23,500		23500	
23,501 - 23,999		xxxxx <sup>1)</sup>	
24,000		24000	24000
24,001 - 24,499		xxxxx <sup>1)</sup>	
24,500		24500	
24,501 - 24,999		xxxxx <sup>1)</sup>	
25,000		25000	25000
25,001 - 25,499		xxxxx <sup>1)</sup>	
25,500		25500	
25,501 - 25,999		xxxxx <sup>1)</sup>	
26,000		26000	26000
26,001 - 26,499		xxxxx <sup>1)</sup>	
26,500		26500	
26,501 - 26,999		xxxxx <sup>1)</sup>	
27,000		27000	27000
27,001 - 27,499		xxxxx <sup>1)</sup>	
27,500		27500	
27,501 - 27,999		xxxxx <sup>1)</sup>	
28,000		28000	
28,001 - 28,499		xxxxx <sup>1)</sup>	
28,500		28500	
28,501 - 28,999		xxxxx <sup>1)</sup>	
29,000		29000	
29,001 - 29,499		xxxxx <sup>1)</sup>	
29,500		29500	
29,501 - 29,999		xxxxx <sup>1)</sup>	
30,000		30000	
30,001 - 30,499		xxxxx <sup>1)</sup>	
30,500		30500	
30,501 - 30,999		xxxxx <sup>1)</sup>	
31,000		31000	
31,001 - 31,499		xxxxx <sup>1)</sup>	
31,500		31500	
31,501 - 31,999		xxxxx <sup>1)</sup>	
32,000		32000	

1) Stokta mevcut değildir, iade edilemez veya değiştirilemez. / Teslim süresi 7 iş günü

.xxxx için sipariş sırasında lütfen istediğiniz çapı belirtin  
(örn. Ø 6,789 - Sipariş No. 81 041 06789!)

## Esnek kılavuz kovanlar

Tanımlama	DFC mm	OAL mm	BHTA °
GBE 28	28	40	22,5



## Kılavuz burç GBE 28



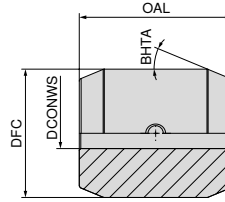
●  
GBE 28

81 059 ...

DCONWS mm	DCONWS inch	
3,000		03000
4,000		04000
5,000		05000
6,000		06000
6,350	1/4	06350
7,000		07000
8,000		08000
9,000		09000
9,525	3/8	09525
10,000		10000
11,000		11000
12,000		12000
12,700	1/2	12700
13,000		13000
14,000		14000
15,000		15000
16,000		16000
17,000		17000
18,000		18000
19,000		19000
19,050	3/4	19050
20,000		20000

## Esnek kılavuz kovanlar

Tanımlama	DFC mm	OAL mm	BHTA °
GBE 42	42	50	22,5



## Kılavuz burç GBE 42



















●  
GBE 42

81 060 ...

DCONWS mm	DCONWS inch	
3,000		03000
4,000		04000
5,000		05000
6,000		06000
6,350	1/4	06350
7,000		07000
8,000		08000
9,000		09000
10,000		10000
11,000		11000
12,000		12000
12,700	1/2	12700
13,000		13000
14,000		14000
15,000		15000
15,875	5/8	15880
16,000		16000
17,000		17000
18,000		18000
19,000		19000
19,050	3/4	19050
20,000		20000
21,000		21000
22,000		22000
22,225	7/8	22225
23,000		23000
24,000		24000
25,000		25000
25,400	1/1	25400
26,000		26000
27,000		27000
28,000		28000
29,000		29000
30,000		30000
31,000		31000
32,000		32000

## Sıkma kovanlarına genel bakış

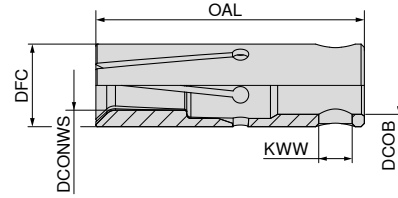
Standart	mm cinsinden dış çap aralığı	Sıkma çapı aralığı	Profil	Versiyon	Sayfa
S 10 / 210 E	10	Ø 3,0 - 10,0			32
		SW 3,0 - 8,0			32
S 12 / 212 E	12	Ø 3,0 - 11,0			33
		SW 3,0 - 9,0			33
S 15 / 203 E	15	Ø 3,0 - 14,0			34
		SW 3,0 - 12,0			34
S 16	16	Ø 3,0 - 15,0			35
		SW 3,0 - 13,0			35
S 18 / 218 E	18	Ø 3,0 - 16,0			36
		SW 5,0 - 14,0			36
S 20 / 225 E	20	Ø 4,0 - 19,0			37
		SW 5,0 - 16,0			37
S 25 / 222 E	25	Ø 4,0 - 24,0			38
		SW 5,0 - 20,0			38
ST32 „Turbo“	32	Ø 5,0 - 32,0		Turbo	39
		SW 5,0 - 26,0			39

 Daha fazla profil şekli ve boyutların yanı sıra genişletilmiş seçenekler istek üzerine mevcuttur.



## Sıkma kovanları

Tanımlama	İtici Ø	DFC mm	KWW mm	DCOB <sup>H7</sup> mm	OAL mm
S 10 / 210 E	D 10	10	4	7	40



## Sıkma kovası S 10 / 210 E

▲ tüm INDEX çok millî tezgahlar için de uygundur



DCONWS mm	DCONWS inch	S 10 / 210 E	
		81 043 ...	81 044 ...
3,000		03000	03000
3,001 - 3,499		xxxxx <sup>1)</sup>	
3,500		03500	
3,501 - 3,999		xxxxx <sup>1)</sup>	
4,000		04000	04000
4,001 - 4,499		xxxxx <sup>1)</sup>	
4,500		04500	
4,501 - 4,999		xxxxx <sup>1)</sup>	
5,000		05000	05000
5,001 - 5,499		xxxxx <sup>1)</sup>	
5,500		05500	
5,501 - 5,999		xxxxx <sup>1)</sup>	
6,000		06000	06000
6,001 - 6,349		xxxxx <sup>1)</sup>	
6,350	1/4	06350	
6,351 - 6,499		xxxxx <sup>1)</sup>	
6,500		06500	
6,501 - 6,999		xxxxx <sup>1)</sup>	
7,000		07000	07000
7,001 - 7,143		xxxxx <sup>1)</sup>	
7,144	9/32	07144	
7,145 - 7,499		xxxxx <sup>1)</sup>	
7,500		07500	
7,501 - 7,937		xxxxx <sup>1)</sup>	
7,938	5/16	07938	
7,939 - 7,999		xxxxx <sup>1)</sup>	
8,000		08000	08000
8,001 - 8,499		xxxxx <sup>1)</sup>	
8,500		08500	
8,501 - 8,999		xxxxx <sup>1)</sup>	
9,000		09000	
9,001 - 9,499		xxxxx <sup>1)</sup>	
9,500		09500	
9,501 - 9,999		xxxxx <sup>1)</sup>	
10,000		10000	

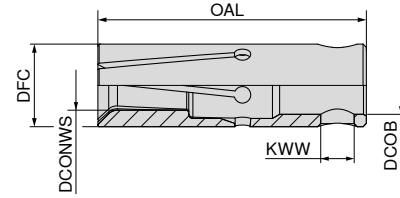
1) Stokta mevcut değildir, iade edilemez veya değiştirilemez. / Teslim süresi 7 iş günü



.xxxx için sipariş sırasında lütfen istediğiniz çapı belirtin(örn. Ø 6,789 – Sipariş No. 81 043 06789)!

## Sıkma kovanları

Tanımlama	İtici Ø	DFC mm	KWW mm	DCOB <sup>H7</sup> mm	OAL mm
S 12 / 212 E	D 12	12	4	8	40



## Sıkma kovanı S 12 / 212 E

▲ tüm INDEX çok millî tezgahlar için de uygundur



DCONWS mm	DCONWS inch	S 12 / 212 E 81 045 ...	S 12 / 212 E 81 046 ...
3,000		03000	03000
3,001 - 3,499		xxxxx <sup>1)</sup>	
3,500		03500	
3,501 - 3,999		xxxxx <sup>1)</sup>	
4,000		04000	04000
4,001 - 4,499		xxxxx <sup>1)</sup>	
4,500		04500	
4,501 - 4,762		xxxxx <sup>1)</sup>	
4,763	3/16	04763	
4,764 - 4,999		xxxxx <sup>1)</sup>	
5,000		05000	05000
5,001 - 5,499		xxxxx <sup>1)</sup>	
5,500		05500	
5,501 - 5,999		xxxxx <sup>1)</sup>	
6,000		06000	06000
6,001 - 6,349		xxxxx <sup>1)</sup>	
6,350	1/4	06350	06350
6,351 - 6,499		xxxxx <sup>1)</sup>	
6,500		06500	
6,501 - 6,999		xxxxx <sup>1)</sup>	
7,000		07000	07000
7,001 - 7,499		xxxxx <sup>1)</sup>	
7,500		07500	
7,501 - 7,937		xxxxx <sup>1)</sup>	
7,938	5/16	07938	
7,939 - 7,999		xxxxx <sup>1)</sup>	
8,000		08000	08000
8,001 - 8,499		xxxxx <sup>1)</sup>	
8,500		08500	
8,501 - 8,999		xxxxx <sup>1)</sup>	
9,000		09000	09000
9,001 - 9,499		xxxxx <sup>1)</sup>	
9,500		09500	
9,501 - 9,524		xxxxx <sup>1)</sup>	
9,525	3/8	09525	
9,526 - 9,999		xxxxx <sup>1)</sup>	
10,000		10000	
10,001 - 10,499		xxxxx <sup>1)</sup>	
10,500		10500	
10,501 - 10,999		xxxxx <sup>1)</sup>	
11,000		11000	

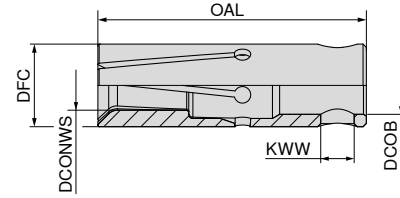
1) Stokta mevcut değildir, iade edilemez veya değiştirilemez. / Teslim süresi 7 iş günü



xxxxx için sipariş sırasında lütfen istediğiniz çapı belirtin(örn. Ø 6,789 – Sipariş No. 81 045 06789)!

## Sıkma kovanları

Tanımlama	İtici Ø	DFC mm	KWW mm	DCOB <sup>H7</sup> mm	OAL mm
S 15 / 203 E	D 15	15	6	11	40



## Sıkma kovanı S 15 / 203 E

▲ tüm INDEX çok millî tezgahlar için de uygundur



S 15 / 203 E

S 15 / 203 E

81 047 ...

81 048 ...

DCONWS mm	DCONWS inch	81 047 ...	81 048 ...
3,000		03000	03000
3,001 - 3,174		xxxxx <sup>1)</sup>	
3,175	1/8	03175	
3,176 - 3,499		xxxxx <sup>1)</sup>	
3,500		03500	
3,501 - 3,999		xxxxx <sup>1)</sup>	
4,000		04000	04000
4,001 - 4,499		xxxxx <sup>1)</sup>	
4,500		04500	
4,501 - 4,999		xxxxx <sup>1)</sup>	
5,000		05000	05000
5,001 - 5,499		xxxxx <sup>1)</sup>	
5,500		05500	
5,501 - 5,999		xxxxx <sup>1)</sup>	
6,000		06000	06000
6,001 - 6,349		xxxxx <sup>1)</sup>	
6,350	1/4	06350	06350
6,351 - 6,499		xxxxx <sup>1)</sup>	
6,500		06500	
6,501 - 6,999		xxxxx <sup>1)</sup>	
7,000		07000	07000
7,001 - 7,499		xxxxx <sup>1)</sup>	
7,500		07500	
7,501 - 7,937		xxxxx <sup>1)</sup>	
7,938	5/16	07938	07938
7,939 - 7,999		xxxxx <sup>1)</sup>	
8,000		08000	08000
8,001 - 8,499		xxxxx <sup>1)</sup>	
8,500		08500	
8,501 - 8,999		xxxxx <sup>1)</sup>	
9,000		09000	09000
9,001 - 9,499		xxxxx <sup>1)</sup>	
9,500		09500	
9,501 - 9,524		xxxxx <sup>1)</sup>	
9,525	3/8	09525	
9,526 - 9,999		xxxxx <sup>1)</sup>	
10,000		10000	10000
10,001 - 10,499		xxxxx <sup>1)</sup>	
10,500		10500	
10,501 - 10,999		xxxxx <sup>1)</sup>	
11,000		11000	11000
11,001 - 11,112		xxxxx <sup>1)</sup>	
11,113	7/16	11113	
11,114 - 11,499		xxxxx <sup>1)</sup>	
11,500		11500	
11,501 - 11,999		xxxxx <sup>1)</sup>	
12,000		12000	12000
12,001 - 12,499		xxxxx <sup>1)</sup>	
12,500		12500	
12,501 - 12,699		xxxxx <sup>1)</sup>	

81 047 ... 81 048 ...

DCONWS mm	DCONWS inch	81 047 ...	81 048 ...
12,700	1/2		12700
12,701 - 12,999			xxxxx <sup>1)</sup>
13,000			13000
13,001 - 13,499			xxxxx <sup>1)</sup>
13,500			13500
13,501 - 13,999			xxxxx <sup>1)</sup>
14,000			14000

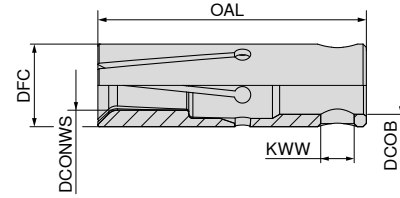
1) Stokta mevcut değildir, iade edilemez veya değiştirilemez. / Teslim süresi 7 iş günü



xxxxx için sipariş sırasında lütfen istediğiniz çapı belirtin  
(örn. Ø 6,789 - Sipariş No. 81 047 06789)!

## Sıkma kovanları

Tanımlama	İtici Ø	DFC mm	KWW mm	DCOB <sub>H7</sub> mm	OAL mm
S 16	D 16	16	6	11	40



## Sıkma kovası S 16

▲ tüm INDEX çok millî tezgahlar için de uygundur



S 16

S 16

DCONWS mm	DCONWS inch	81 049 ...	81 050 ...
3,000		03000	03000
3,001 - 3,499		xxxxx <sup>1)</sup>	
3,500		03500	
3,501 - 3,999		xxxxx <sup>1)</sup>	
4,000		04000	04000
4,001 - 4,499		xxxxx <sup>1)</sup>	
4,500		04500	
4,501 - 4,999		xxxxx <sup>1)</sup>	
5,000		05000	05000
5,001 - 5,499		xxxxx <sup>1)</sup>	
5,500		05500	
5,501 - 5,999		xxxxx <sup>1)</sup>	
6,000		06000	06000
6,001 - 6,349		xxxxx <sup>1)</sup>	
6,350	1/4	06350	
6,351 - 6,499		xxxxx <sup>1)</sup>	
6,500		06500	
6,501 - 6,999		xxxxx <sup>1)</sup>	
7,000		07000	07000
7,001 - 7,499		xxxxx <sup>1)</sup>	
7,500		07500	
7,501 - 7,999		xxxxx <sup>1)</sup>	
8,000		08000	08000
8,001 - 8,499		xxxxx <sup>1)</sup>	
8,500		08500	
8,501 - 8,999		xxxxx <sup>1)</sup>	
9,000		09000	09000
9,001 - 9,499		xxxxx <sup>1)</sup>	
9,500		09500	
9,501 - 9,524		xxxxx <sup>1)</sup>	
9,525	3/8	09525	
9,526 - 9,999		xxxxx <sup>1)</sup>	
10,000		10000	10000
10,001 - 10,499		xxxxx <sup>1)</sup>	
10,500		10500	
10,501 - 10,999		xxxxx <sup>1)</sup>	
11,000		11000	11000
11,001 - 11,112		xxxxx <sup>1)</sup>	
11,113	7/16	11113	
11,114 - 11,499		xxxxx <sup>1)</sup>	
11,500		11500	
11,501 - 11,999		xxxxx <sup>1)</sup>	
12,000		12000	12000
12,001 - 12,499		xxxxx <sup>1)</sup>	
12,500		12500	
12,501 - 12,699		xxxxx <sup>1)</sup>	
12,700	1/2	12700	
12,701 - 12,999		xxxxx <sup>1)</sup>	
13,000		13000	13000
13,001 - 13,499		xxxxx <sup>1)</sup>	

81 049 ... 81 050 ...

DCONWS mm	DCONWS inch	81 049 ...	81 050 ...
13,500		13500	
13,501 - 13,999		xxxxx <sup>1)</sup>	
14,000		14000	
14,001 - 14,287		xxxxx <sup>1)</sup>	
14,288	9/16	14288	
14,289 - 14,499		xxxxx <sup>1)</sup>	
14,500		14500	
14,501 - 14,999		xxxxx <sup>1)</sup>	
15,000		15000	

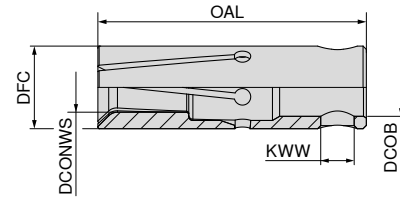
1) Stokta mevcut değildir, iade edilemez veya değiştirilemez. / Teslim süresi 7 iş günü



xxxx için sipariş sırasında lütfen istediğiniz çapı belirtin  
(örn. Ø 6,789 – Sipariş No. 81 049 06789)!

## Sıkma kovanları

Tanımlama	İtici Ø	DFC mm	KWW mm	DCOB <sup>H7</sup> mm	OAL mm
S 18 / 218 E	D 18	18	6	11	40



## Sıkma kovası S 18 / 218 E

▲ tüm INDEX çok millî tezgahlar için de uygundur



S 18 / 218 E

S 18 / 218 E

81 051 ...

81 052 ...

DCONWS mm	DCONWS inch	81 051 ...	81 052 ...
3,000		03000	
3,001 - 3,174		xxxxx <sup>1)</sup>	
3,175	1/8	03175	
3,176 - 3,499		xxxxx <sup>1)</sup>	
3,500		03500	
3,501 - 3,999		xxxxx <sup>1)</sup>	
4,000		04000	
4,001 - 4,499		xxxxx <sup>1)</sup>	
4,500		04500	
4,501 - 4,762		xxxxx <sup>1)</sup>	
4,763	3/16	04763	
4,764 - 4,999		xxxxx <sup>1)</sup>	
5,000		05000	05000
5,001 - 5,499		xxxxx <sup>1)</sup>	
5,500		05500	
5,501 - 5,999		xxxxx <sup>1)</sup>	
6,000		06000	06000
6,001 - 6,499		xxxxx <sup>1)</sup>	
6,500		06500	
6,501 - 6,999		xxxxx <sup>1)</sup>	
7,000		07000	07000
7,001 - 7,499		xxxxx <sup>1)</sup>	
7,500		07500	
7,501 - 7,937		xxxxx <sup>1)</sup>	
7,938	5/16	07938	
7,939 - 7,999		xxxxx <sup>1)</sup>	
8,000		08000	08000
8,001 - 8,499		xxxxx <sup>1)</sup>	
8,500		08500	
8,501 - 8,999		xxxxx <sup>1)</sup>	
9,000		09000	09000
9,001 - 9,499		xxxxx <sup>1)</sup>	
9,500		09500	
9,501 - 9,524		xxxxx <sup>1)</sup>	
9,525	3/8	09525	
9,526 - 9,999		xxxxx <sup>1)</sup>	
10,000		10000	10000
10,001 - 10,499		xxxxx <sup>1)</sup>	
10,500		10500	
10,501 - 10,999		xxxxx <sup>1)</sup>	
11,000		11000	11000
11,001 - 11,112		xxxxx <sup>1)</sup>	
11,113	7/16	11113	
11,114 - 11,499		xxxxx <sup>1)</sup>	
11,500		11500	
11,501 - 11,999		xxxxx <sup>1)</sup>	
12,000		12000	12000
12,001 - 12,499		xxxxx <sup>1)</sup>	
12,500		12500	
12,501 - 12,699		xxxxx <sup>1)</sup>	
12,700	1/2	12700	12700
12,701 - 12,999		xxxxx <sup>1)</sup>	
13,000		13000	13000
13,001 - 13,499		xxxxx <sup>1)</sup>	
13,500		13500	

81 051 ...

81 052 ...

DCONWS mm	DCONWS inch	81 051 ...	81 052 ...
13,501 - 13,999		xxxxx <sup>1)</sup>	
14,000		14000	14000
14,001 - 14,287		xxxxx <sup>1)</sup>	
14,288	9/16	14288	
14,289 - 14,499		xxxxx <sup>1)</sup>	
14,500		14500	
14,501 - 14,999		xxxxx <sup>1)</sup>	
15,000		15000	
15,001 - 15,499		xxxxx <sup>1)</sup>	
15,500		15500	
15,501 - 15,874		xxxxx <sup>1)</sup>	
15,875	5/8	15875	
15,876 - 15,999		xxxxx <sup>1)</sup>	
16,000		16000	

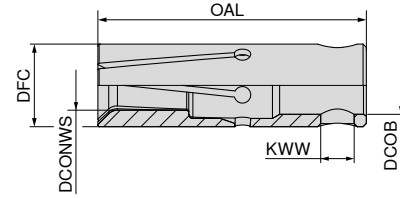
1) Stokta mevcut değildir, iade edilemez veya değiştirilemez. / Teslim süresi 7 iş günü



.xxxx için sipariş sırasında lütfen istediğiniz çapı belirtin  
(örn. Ø 6,789 - Sipariş No. 81 051 06789)!

## Sıkma kovanları

Tanımlama	İtici Ø	DFC mm	KWW mm	DCOB <sub>H7</sub> mm	OAL mm
S 20 / 225 E	D 20	20	8	14	65



## Sıkma kovanı S 20 / 225 E

▲ tüm INDEX çok milli tezgahlar için de uygundur



S 20 / 225 E

S 20 / 225 E

81 053 ...

81 054 ...

DCONWS mm	DCONWS inch	81 053 ...	81 054 ...
4,000		04000	
4,001 - 4,499		xxxxx <sup>1)</sup>	
4,500		04500	
4,501 - 4,762		xxxxx <sup>1)</sup>	
4,763	3/16	04763	
4,764 - 4,999		xxxxx <sup>1)</sup>	
5,000		05000	05000
5,001 - 5,499		xxxxx <sup>1)</sup>	
5,500		05500	
5,501 - 5,999		xxxxx <sup>1)</sup>	
6,000		06000	06000
6,001 - 6,349		xxxxx <sup>1)</sup>	
6,350	1/4	06350	06350
6,351 - 6,499		xxxxx <sup>1)</sup>	
6,500		06500	
6,501 - 6,999		xxxxx <sup>1)</sup>	
7,000		07000	07000
7,001 - 7,499		xxxxx <sup>1)</sup>	
7,500		07500	
7,501 - 7,937		xxxxx <sup>1)</sup>	
7,938	5/16	07938	
7,939 - 7,999		xxxxx <sup>1)</sup>	
8,000		08000	08000
8,001 - 8,499		xxxxx <sup>1)</sup>	
8,500		08500	
8,501 - 8,999		xxxxx <sup>1)</sup>	
9,000		09000	09000
9,001 - 9,499		xxxxx <sup>1)</sup>	
9,500		09500	
9,501 - 9,524		xxxxx <sup>1)</sup>	
9,525	3/8	09525	
9,526 - 9,999		xxxxx <sup>1)</sup>	
10,000		10000	10000
10,001 - 10,499		xxxxx <sup>1)</sup>	
10,500		10500	
10,501 - 10,999		xxxxx <sup>1)</sup>	
11,000		11000	11000
11,001 - 11,112		xxxxx <sup>1)</sup>	
11,113	7/16	11113	
11,114 - 11,499		xxxxx <sup>1)</sup>	
11,500		11500	
11,501 - 11,999		xxxxx <sup>1)</sup>	
12,000		12000	12000
12,001 - 12,499		xxxxx <sup>1)</sup>	
12,500		12500	
12,501 - 12,699		xxxxx <sup>1)</sup>	
12,700	1/2	12700	12700
12,701 - 12,999		xxxxx <sup>1)</sup>	
13,000		13000	13000
13,001 - 13,499		xxxxx <sup>1)</sup>	
13,500		13500	
13,501 - 13,999		xxxxx <sup>1)</sup>	
14,000		14000	14000
14,001 - 14,499		xxxxx <sup>1)</sup>	
14,500		14500	

81 053 ... 81 054 ...

DCONWS mm	DCONWS inch	81 053 ...	81 054 ...
14,501 - 14,999		xxxxx <sup>1)</sup>	
15,000		15000	15000
15,001 - 15,499		xxxxx <sup>1)</sup>	
15,500		15500	
15,501 - 15,999		xxxxx <sup>1)</sup>	
16,000		16000	16000
16,001 - 16,499		xxxxx <sup>1)</sup>	
16,500		16500	
16,501 - 16,999		xxxxx <sup>1)</sup>	
17,000		17000	
17,001 - 17,499		xxxxx <sup>1)</sup>	
17,500		17500	
17,501 - 17,999		xxxxx <sup>1)</sup>	
18,000		18000	
18,001 - 18,499		xxxxx <sup>1)</sup>	
18,500		18500	
18,501 - 18,999		xxxxx <sup>1)</sup>	
19,000		19000	

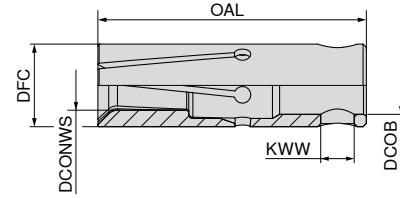
1) Stokta mevcut değildir, iade edilemez veya değiştirilemez. / Teslim süresi 7 iş günü



.xxxx için sipariş sırasında lütfen istediğiniz çapı belirtin  
(örn. Ø 6,789 - Sipariş No. 81 053 06789)!

## Sıkma kovanları

Tanımlama	İtici Ø	DFC mm	KWW mm	DCOB <sub>H7</sub> mm	OAL mm
S 25 / 222 E	D 25	25	8	20	65



## Sıkma kovası S 25 / 222 E

▲ tüm INDEX çok millî tezgahlar için de uygundur



S 25 / 222 E

S 25 / 222 E

81 056 ...

81 055 ...

DCONWS mm	DCONWS inch	81 056 ...	81 055 ...
4,000			04000
4,001 - 4,499			xxxxx <sup>1)</sup>
4,500			04500
4,501 - 4,999			xxxxx <sup>1)</sup>
5,000		05000	05000
5,001 - 5,499			xxxxx <sup>1)</sup>
5,500			05500
5,501 - 5,999			xxxxx <sup>1)</sup>
6,000		06000	06000
6,001 - 6,349			xxxxx <sup>1)</sup>
6,350	1/4	06350	06350
6,351 - 6,499			xxxxx <sup>1)</sup>
6,500			06500
6,501 - 6,999			xxxxx <sup>1)</sup>
7,000		07000	07000
7,001 - 7,499			xxxxx <sup>1)</sup>
7,500			07500
7,501 - 7,999			xxxxx <sup>1)</sup>
8,000		08000	08000
8,001 - 8,499			xxxxx <sup>1)</sup>
8,500			08500
8,501 - 8,999			xxxxx <sup>1)</sup>
9,000		09000	09000
9,001 - 9,499			xxxxx <sup>1)</sup>
9,500			09500
9,501 - 9,999			xxxxx <sup>1)</sup>
10,000		10000	10000
10,001 - 10,499			xxxxx <sup>1)</sup>
10,500			10500
10,501 - 10,999			xxxxx <sup>1)</sup>
11,000		11000	11000
11,001 - 11,499			xxxxx <sup>1)</sup>
11,500			11500
11,501 - 11,999			xxxxx <sup>1)</sup>
12,000		12000	12000
12,001 - 12,499			xxxxx <sup>1)</sup>
12,500			12500
12,501 - 12,699			xxxxx <sup>1)</sup>
12,700	1/2		12700
12,701 - 12,999			xxxxx <sup>1)</sup>
13,000		13000	13000
13,001 - 13,499			xxxxx <sup>1)</sup>
13,500			13500
13,501 - 13,999			xxxxx <sup>1)</sup>
14,000		14000	14000
14,001 - 14,499			xxxxx <sup>1)</sup>
14,500			14500
14,501 - 14,999			xxxxx <sup>1)</sup>
15,000		15000	15000
15,001 - 15,499			xxxxx <sup>1)</sup>
15,500			15500
15,501 - 15,999			xxxxx <sup>1)</sup>
16,000		16000	16000
16,001 - 16,499			xxxxx <sup>1)</sup>
16,500			16500

81 056 ...

81 055 ...

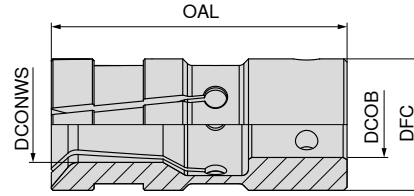
DCONWS mm	DCONWS inch	81 056 ...	81 055 ...
16,501 - 16,999			xxxxx <sup>1)</sup>
17,000		17000	17000
17,001 - 17,499			xxxxx <sup>1)</sup>
17,500			17500
17,501 - 17,999			xxxxx <sup>1)</sup>
18,000		18000	18000
18,001 - 18,499			xxxxx <sup>1)</sup>
18,500			18500
18,501 - 18,999			xxxxx <sup>1)</sup>
19,000		19000	19000
19,001 - 19,049			xxxxx <sup>1)</sup>
19,050	3/4		19050
19,051 - 19,499			xxxxx <sup>1)</sup>
19,500			19500
19,501 - 19,999			xxxxx <sup>1)</sup>
20,000		20000	20000
20,001 - 20,499			xxxxx <sup>1)</sup>
20,500			20500
20,501 - 20,999			xxxxx <sup>1)</sup>
21,000			21000
21,001 - 21,499			xxxxx <sup>1)</sup>
21,500			21500
21,501 - 21,999			xxxxx <sup>1)</sup>
22,000			22000
22,001 - 22,499			xxxxx <sup>1)</sup>
22,500			22500
22,501 - 22,999			xxxxx <sup>1)</sup>
23,000			23000
23,001 - 23,499			xxxxx <sup>1)</sup>
23,500			23500
23,501 - 23,999			xxxxx <sup>1)</sup>
24,000			24000

1) Stokta mevcut değildir, iade edilemez veya değiştirilemez. / Teslim süresi 7 iş günü

.xxxx için sipariş sırasında lütfen istediğiniz çapı belirtin  
(örn. Ø 6,789 - Sipariş No. 81 056 06789)!

## Sıkma kovanları

Tanımlama	İtici Ø	DFC mm	DCOB <sub>H7</sub> mm	OAL mm
ST 32	D 32	32	20	90



## Sıkma kovanı ST 32 (Turbo versiyonu)

▲ tüm INDEX çok millî tezgahlar için de uygundur



ST 32 ST 32

DCONWS mm	DCONWS inch	81 057 ...	81 058 ...
5,000		05000	05000
5,001 - 5,499		xxxxx <sup>1)</sup>	
5,500		05500	
5,501 - 5,999		xxxxx <sup>1)</sup>	
6,000		06000	06000
6,001 - 6,349		xxxxx <sup>1)</sup>	
6,350	1/4	06350	
6,351 - 6,499		xxxxx <sup>1)</sup>	
6,500		06500	
6,501 - 6,999		xxxxx <sup>1)</sup>	
7,000		07000	07000
7,001 - 7,499		xxxxx <sup>1)</sup>	
7,500		07500	
7,501 - 7,999		xxxxx <sup>1)</sup>	
8,000		08000	08000
8,001 - 8,499		xxxxx <sup>1)</sup>	
8,500		08500	
8,501 - 8,999		xxxxx <sup>1)</sup>	
9,000		09000	09000
9,001 - 9,499		xxxxx <sup>1)</sup>	
9,500		09500	
9,501 - 9,524		xxxxx <sup>1)</sup>	
9,525	3/8	09525	
9,526 - 9,999		xxxxx <sup>1)</sup>	
10,000		10000	10000
10,001 - 10,499		xxxxx <sup>1)</sup>	
10,500		10500	
10,501 - 10,999		xxxxx <sup>1)</sup>	
11,000		11000	11000
11,001 - 11,499		xxxxx <sup>1)</sup>	
11,500		11500	
11,501 - 11,999		xxxxx <sup>1)</sup>	
12,000		12000	12000
12,001 - 12,499		xxxxx <sup>1)</sup>	
12,500		12500	
12,501 - 12,699		xxxxx <sup>1)</sup>	
12,700	1/2	12700	
12,701 - 12,999		xxxxx <sup>1)</sup>	
13,000		13000	13000
13,001 - 13,499		xxxxx <sup>1)</sup>	
13,500		13500	
13,501 - 13,999		xxxxx <sup>1)</sup>	
14,000		14000	14000
14,001 - 14,499		xxxxx <sup>1)</sup>	
14,500		14500	
14,501 - 14,999		xxxxx <sup>1)</sup>	
15,000		15000	15000
15,001 - 15,499		xxxxx <sup>1)</sup>	
15,500		15500	
15,501 - 15,874		xxxxx <sup>1)</sup>	
15,875	5/8	15875	
15,876 - 15,999		xxxxx <sup>1)</sup>	
16,000		16000	16000
16,001 - 16,499		xxxxx <sup>1)</sup>	
16,500		16500	
16,501 - 16,999		xxxxx <sup>1)</sup>	
17,000		17000	17000
17,001 - 17,462		xxxxx <sup>1)</sup>	
17,463	11/16	17463	
17,464 - 17,499		xxxxx <sup>1)</sup>	
17,500		17500	
17,501 - 17,999		xxxxx <sup>1)</sup>	
18,000		18000	18000
18,001 - 18,499		xxxxx <sup>1)</sup>	

81 057 ... 81 058 ...

DCONWS mm	DCONWS inch	81 057 ...	81 058 ...
18,500		18500	
18,501 - 18,999		xxxxx <sup>1)</sup>	
19,000		19000	19000
19,001 - 19,049		xxxxx <sup>1)</sup>	
19,050	3/4	19050	
19,051 - 19,499		xxxxx <sup>1)</sup>	
19,500		19500	
19,501 - 19,999		xxxxx <sup>1)</sup>	
20,000		20000	20000
20,001 - 20,499		xxxxx <sup>1)</sup>	
20,500		20500	
20,501 - 20,999		xxxxx <sup>1)</sup>	
21,000		21000	21000
21,001 - 21,499		xxxxx <sup>1)</sup>	
21,500		21500	
21,501 - 21,999		xxxxx <sup>1)</sup>	
22,000		22000	22000
22,001 - 22,224		xxxxx <sup>1)</sup>	
22,225	7/8	22225	
22,226 - 22,499		xxxxx <sup>1)</sup>	
22,500		22500	
22,501 - 22,999		xxxxx <sup>1)</sup>	
23,000		23000	23000
23,001 - 23,499		xxxxx <sup>1)</sup>	
23,500		23500	
23,501 - 23,999		xxxxx <sup>1)</sup>	
24,000		24000	24000
24,001 - 24,499		xxxxx <sup>1)</sup>	
24,500		24500	
24,501 - 24,999		xxxxx <sup>1)</sup>	
25,000		25000	25000
25,001 - 25,399		xxxxx <sup>1)</sup>	
25,400	1/1	25400	
25,401 - 25,499		xxxxx <sup>1)</sup>	
25,500		25500	
25,501 - 25,999		xxxxx <sup>1)</sup>	
26,000		26000	26000
26,001 - 26,499		xxxxx <sup>1)</sup>	
26,500		26500	
26,501 - 26,999		xxxxx <sup>1)</sup>	
27,000		27000	
27,001 - 27,499		xxxxx <sup>1)</sup>	
27,500		27500	
27,501 - 27,999		xxxxx <sup>1)</sup>	
28,000		28000	
28,001 - 28,499		xxxxx <sup>1)</sup>	
28,500		28500	
28,501 - 28,574		xxxxx <sup>1)</sup>	
28,575	1 1/8	28575	
28,576 - 28,999		xxxxx <sup>1)</sup>	
29,000		29000	
29,001 - 29,499		xxxxx <sup>1)</sup>	
29,500		29500	
29,501 - 29,999		xxxxx <sup>1)</sup>	
30,000		30000	

1) Stokta mevcut değildir, iade edilemez veya değiştirilemez. / Teslim süresi 7 iş günü

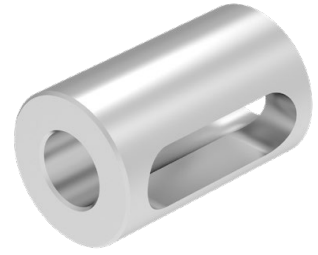
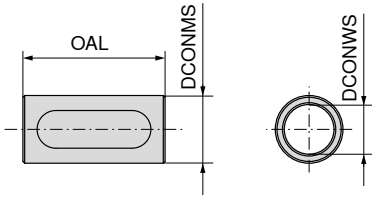


xxxx için sipariş sırasında lütfen istediğiniz çapı belirtin  
(örn. Ø 6,789 – Sipariş No. 81 057 06789)!



## Redüksiyon burcu

- ▲ Silindirik şaftlı takımlar için
- ▲ Konsantriklik  $\leq 0,01$  mm



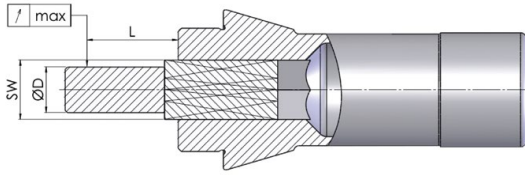
NEW

81 427 ...

DCONMS <sub>g6</sub> mm	DCONMS <sub>g6</sub> inch	DCONWS <sub>H7</sub> mm	OAL mm	
15,875	5/8	12	30	15912
16,000		12	30	16012
19,050	3/4	8	40	19108
19,050	3/4	10	40	19110
19,050	3/4	12	40	19112
19,050	3/4	14	40	19114
19,050	3/4	16	40	19116
20,000		10	40	20010
20,000		12	40	20012
20,000		16	40	20016
22,000		12	40	22012
22,000		16	40	22016
25,000		12	40	25012
25,000		16	40	25016
25,000		20	40	25020
25,400	1	12	40	25412
25,400	1	16	40	25416
25,400	1	20	40	25420
33,000		20	40	33020
33,000		22	40	33022
33,000		25	40	33025

## Teknik Bilgiler

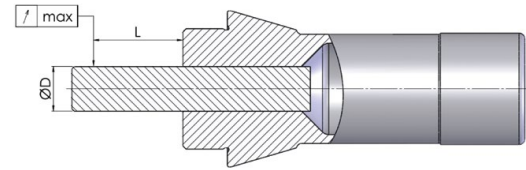
## Konsantriklik



Profilli penslerin eşmerkezlilik toleransları					
Profil SW		L mm	Standart norm	Standart	
ilk	e kadar / a kadar			Standard	HP*
0,5	0,9	3	0,12	< 0,02	< 0,01
1	1,5	6	0,12	< 0,02	< 0,01
1,6	3	10	0,12	< 0,02	< 0,01
3,1	6	16	0,12	< 0,02	< 0,01
6,1	10	25	0,15	< 0,02	< 0,01
10,1	18	40	0,2	< 0,02	< 0,01
18,1	24	50	0,2	< 0,02	< 0,01
24,1	30	60	0,2	< 0,02	< 0,01
30,0		80	0,2	< 0,02	< 0,01

\* HP (HighPrecision) seçeneğiyle daha düşük eşmerkezlilik toleransları istek üzerine mevcuttur.

Profil penslerimiz ve kılavuz kovanlarımızın da 7 kesime kadar ince aşındırması gerçekleştirilmektedir. Böylece size en düşük eşmerkezlilik toleranslarıyla birlikte en yüksek kaliteyi aynı anda sağlamaktayız.



Yuvarlak penslerin eşmerkezlilik toleransları				
Delik		L mm	Standart	
ilk	e kadar / a kadar		Standard	HP*
0,5	0,9	3	< 0,01	< 0,008
1	1,5	6	< 0,01	< 0,008
1,6	3	10	< 0,015	< 0,008
3,1	6	16	< 0,015	< 0,008
6,1	10	25	< 0,015	< 0,008
10,1	18	40	< 0,02	< 0,01
18,1	24	50	< 0,02	< 0,01
24,1	30	60	< 0,02	< 0,01
30,0		80	< 0,03	< 0,015

\* HP (HighPrecision) seçeneğiyle daha düşük eşmerkezlilik toleransları istek üzerine mevcuttur.

Talebiniz bizim çabamızdır. Bu nedenle WNT standardının tolerans aralığı, standart toleranslarından belirgin ölçüde daha dardır. Makine bileşenlerinin hizmet ömrü de, tıpkı aletlerinki gibi artar.

## Özel formlar

Çok sayıda farklı uygulamanın varlığı, bazı ürünlerin proseslere münferit olarak uyarlanmasını gerekli kılmaktadır.

Bunun için size spesifikasyonunuza göre en yüksek kaliteyi sunmaktayız.

Aşağıda sunduğumuz olanaklardan yararlanın ve sıkma aracınızın üretilmesini sağlayın:

## kişisel danışma

Sıkma aracı seçeneklerimizle mi ilgileniyorsunuz?


O zaman sahadaki uygulama mühendislerimiz size danışmanlık vermekten mutluluk duyacaklardır. Tabii ki bu, ofisteki ücretsiz servis numaramızdan ulaşılabilen teknik danışmanlarımız için de geçerlidir.

## Form yolu ile sorgu

Özel olarak uyarlanmış çözümler hakkında bize bir soru göndermek istemeniz halinde, ana sayfamızdaki indirme alanımızda ayrıntılı bir anket formu bulabilirsiniz. Lütfen dikkatli bir şekilde doldurun ve bastırdıktan sonra e-posta veya faks ile gönderin.

→ [cuttingtools.ceratizit.com/tr/tr/indirme.html](http://cuttingtools.ceratizit.com/tr/tr/indirme.html)

Lütfen doldurulmuş formu e-posta ile [info.turkey@ceratizit.com](mailto:info.turkey@ceratizit.com) adresine gönderin.

 Daha fazla profil şekli ve boyutların yanı sıra genişletilmiş seçenekler istek üzerine mevcuttur.